



abaGRIGLIATI

Forging ideas since 1975

PROFILES CATALOGUE 2023
floorings - steps

Experience shaped by time

Industrial solidity and vision: a passion born in 1975.

A long activity made of passion and commitment, started in 1975 by Lionello Bortolato who, just over twenty years old, opened his own business and specialized in the production of industrial shelving, subsequently concentrating on the production of components for shelving and more advanced storage systems, focusing on metal profiles for gangways and mezzanines. The company's rapid growth required the construction of its first new factory in Massanzago (Padua province) in 1990. At the end of the 1990s, the company, by now known as ABA, expanded, the workforce became more qualified and the machinery used more and more advanced. The company established itself on the market for its reliability, quality, speed and punctuality of deliveries, but above all for its policy of personalising its products, which were made to measure and capable of integrating safety and functionality. In 2005, there was a change of company Abagrigliati was born and the handover to the second generation opened a new chapter in its history of innovation and development. Attention and care for details led to the construction of the new logistics warehouse in 2010, bringing the covered area to 8000 sqm.



We exceed your expectations!

Flexibility and research to add value to every space. The ability to create highly flexible, functional and efficient solutions allows us to present ourselves on the market today with a distinctive identity and know-how strongly oriented towards customization. A dynamic and creative production, the highest expression of "made-to-measure", able to satisfy every day the most particular requests of our customers. Ideas are shaped to create innovative products and offer solutions that give the right value to the work of others.

In this context, important milestones for our company are included, the result of constant teamwork, which has made us a reference point in the production of metal profiles. An example of this is the compliance with the European regulation 305/2011 for the CE marking 1090- 1 EXC3 for steel and

aluminium profiles, but also the anti-slip certifications obtained from tests carried out at a certified laboratory and the load-bearing capacity tests carried out at the Experimental Laboratory for tests on construction materials of the ICEA department (University of Padua). Welding operations also follow the UNI EN 3834-2 standard.



Our primary goal is the satisfaction of not only our customers, but also of those who work with us, through the continuous improvement of all company processes and the careful and scrupulous management of quality, health, safety and environmental issues. For this reason, in addition to the certifications, we follow the UNI INAIL guidelines and the 231 model for Corporate Administrative Responsibility.

A world under your feet

Advice and customisation for high performance security.

People entrust us with their most precious asset: their security. For this reason, our work is not limited to the supply of what they need, but is the result of many activities that see our constant presence at the customer's side to give them all the reliability they deserve. The technical expertise of our team and the constant updating on regulations allow us to recommend the right product and to provide the

best service and the most suitable material for each requirement, and to study customized and absolutely unique solutions, even for more complex and unusual applications. After careful evaluation of the request, our technical department identifies the most suitable solutions to meet quality and safety requirements. We then proceed to develop the solutions and CE mark all products, which are then certified and accompanied by the relevant technical documentation, with very fast delivery times.



If it doesn't exist, we create it!

Between functionality and aesthetics, always the best choice.

Profiles can be used in many different areas, from construction to industry, from agriculture to logistics. Their structural lightness and high load-bearing capacity make them a functional element for covering platforms and shelves, and at the same time an aesthetically pleasing element, appreciated by architects and builders as a decorative detail.

Each element must be designed and manufactured by carefully assessing the use and environmental conditions in which it is placed, which is why it is essential to guarantee a complete variety of products, always in step with specific requirements and current regulations.

A comprehensive range and a consultative approach to guide you step by step towards your goal.

The choice of the most suitable product among those in the catalogue must necessarily go hand in hand with the customisation of the workmanship and the choice of the right material, because every request is never the same. We love challenges and seeing satisfaction in the eyes of our customers, which is why we always put our utmost effort into interpreting their needs in a concrete manner and giving form to what does not exist, offering a product that encompasses all the characteristics of safety, solidity, maximum performance and the ability to last over time.



FLOORING PROFILES

A wide selection of profiled sheet metal gratings with special reliefs and surface perforations for walkways and walkway surfaces of all kinds. Depending on the application, each process guarantees high structural rigidity, slip resistance, heel resistance, high load-bearing capacity, structural lightness and perfect stability.



STEPS AND RUNGS

The most refined workmanship and the best materials including Sendzimir galvanized steel, raw or hot-dip galvanized steel, AISI304 or AISI316 stainless steel, 5754 H111 aluminium alloy and Cor-Ten steel, to create structures of the utmost reliability and durability, with a high anti-slip grip. Our stair treads strike the right balance between aesthetics and functionality and, thanks to the special surface treatment that makes them suitable for both indoor and outdoor use, as well as highly resistant to wear and tear and time, they require no maintenance.



SPECIALS

The ability to assess the most suitable profile for the request made to us and to adapt or integrate it into the individual project is the strength of our technical department which, through a feasibility study, selects the product that is functional to the objectives set with the customer, always offering the perfect mix of load capacity, safety, durability, aesthetics and ease of assembly.

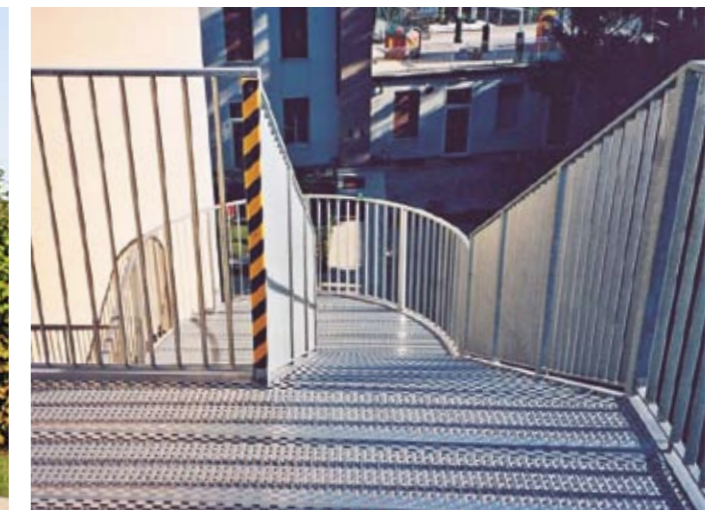
Index

FLOORING PROFILES

PROFILES H29 (Types: PB - PL - PFR)	Page	6
ACCESSORIES H29	Page	7
H29 ANCHORAGE SCHEMES	Page	8
PERFORATED PROFILES H58 P40 - P50 (Types: RSA - GP - ZFR)	Page	9
HAND PALLET TRUCK PROFILES H58 P50 (Types: RSC - RSC 3.0 - RSC/F)	Page	10
EMBOSSSED CLOSED PROFILES H58 P50 (Types: ZB - ZBC - ZL - ZA)	Pages	11-12
EMBOSSSED PERFORATED PROFILES H58 P60 (Types: LB - GE)	Page	13
EMBOSSSED CLOSED AND PERFORATED PROFILES H58 P60 (Types: XB - XF)	Page	14
ACCESSORIES H58	Pages	15-16
H58 ANCHORING SYSTEMS	Pages	17-18
H58 ANCHORAGE SCHEMES - HEAD JOINTS	Page	19

STEPS AND RUNGS PROFILES

EMBOSSSED PERFORATED STEPS H58 P50 (Types: GF - ZB2)	Page	20
EMBOSSSED CLOSED AND PERFORATED STEPS H58 P50 - P60 (Types: ZBC - GB2 - GLB)	Page	21
EMBOSSSED PERFORATED STEPS H58 P60 (Types: GXB - GXF)	Page	22
ANCHORAGE SCHEMES	Page	23
WELDED HEAD STEPS GF (Types: GF250TS - GF300TS - GF325TS - GF300/2400TS - GF325/2400TS)	Page	24
WELDED HEAD TECHNICAL DRAWING	Page	25
RUNGS	Page	26

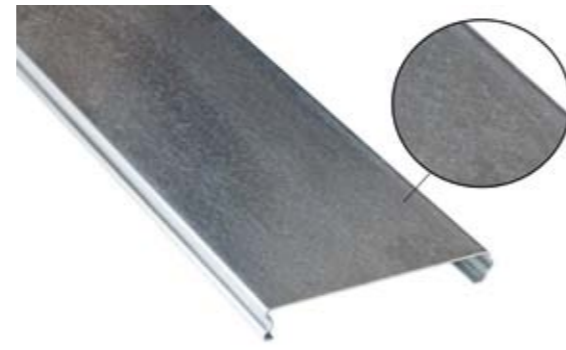


Quoted photos, data and technical information are not binding. Abagrigliati srl reserves the right to modify them, (photos, data & technical information), without notice, in case of technical and/or manufacturing necessities. Abagrigliati srl refuses any responsibility for deformations or failures due to an improper or abnormal use. Abagrigliati refuses any responsibility for possible inaccuracies due to printing or transcribing mistakes.



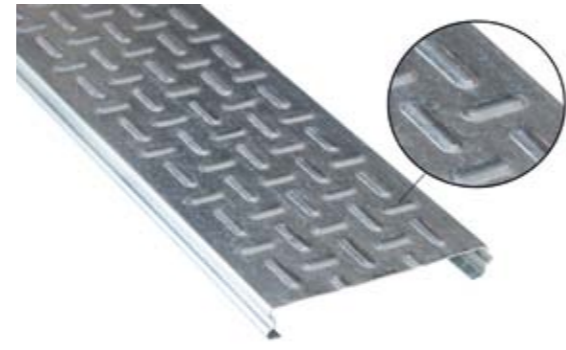
Type **Profile PL**

Available sections: W x H x THK (mm)	200x29x1.5	200x29x2.0
Length (mm):	500 to 10000	
Intermediate measures:	Cutting Pitch 1 mm	
Material:	Sendzimir Zinc Plated Steel	
Features:	<ul style="list-style-type: none"> ▪ Suitable for floor coverings like carpets, lino floors, chipboard, plywood and laminated plastic coverings ▪ Suitable as shelving panels 	



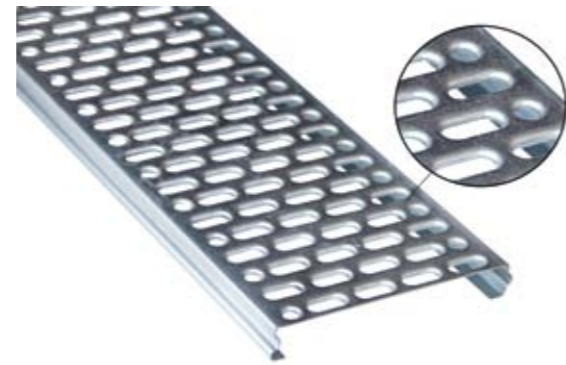
Type **Profile PB**

Available sections: W x H x THK (mm)	200x29x1.5	200x29x2.0
Length (mm):	500 to 10000	
Intermediate measures:	Cutting Pitch 1 mm	
Material:	Sendzimir Zinc Plated Steel	
Features:	<ul style="list-style-type: none"> ▪ High structural rigidity ▪ Suitable as shelving panels 	



Type **Profile PFR**

Available sections: W x H x THK (mm)	200x29x1.5	200x29x2.0
Length (mm):	500 to 6000	
Intermediate measures:	Cutting Pitch 1 mm	
Material:	<ul style="list-style-type: none"> ▪ Raw Steel Thk. 2.0 mm ▪ Sendzimir Zinc Plated Steel ▪ Hot-Dip Galvanized Steel Tkh. 2.0 mm 	
Features:	<ul style="list-style-type: none"> ▪ High structural rigidity ▪ Suitable as shelving panels 	



ACCESSORIES H29

Compensation PL



Head cover 30x30x30h



Reinforced joint



Clamp SU3825 with screw



Bracket S38 with screw

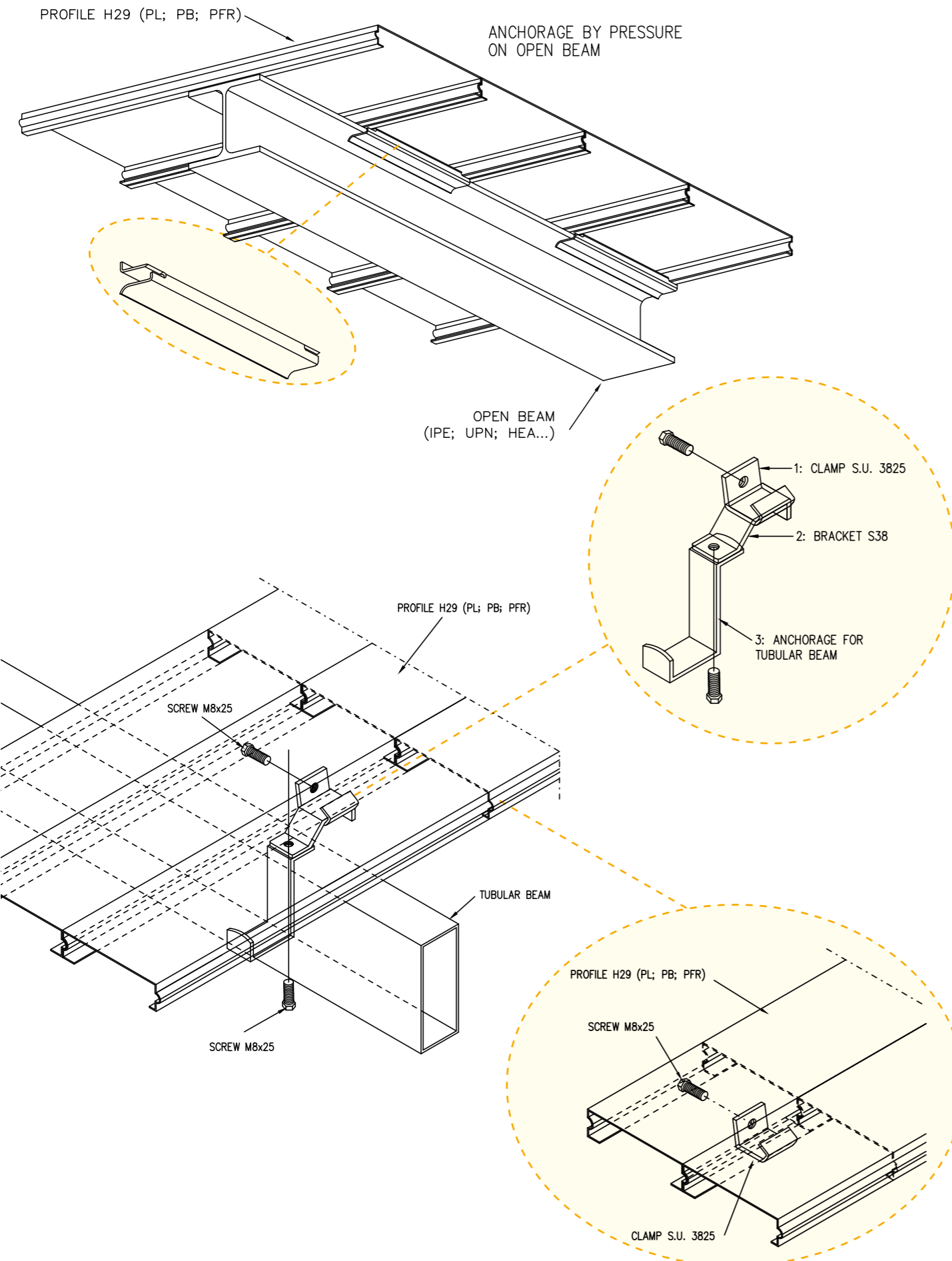


Tubular beam anchorage



Pressure anchorage





Type **Profile RSA**

Available sections: W x H x THK (mm)	250x58x1.2	250x58x1.5
Length (mm):	600 to 12000	
Intermediate measures:	Cutting Pitch 40 mm	
Material:	Sendzimir Zinc Plated Steel	
Features:	<ul style="list-style-type: none"> High structural rigidity Suitable for mezzanines and gangways 40% perforated profile 	



Type **Profile GP**

Available sections: W x H x THK (mm)	125x58x1.2	125x58x1.5	125x58x2.0
	/	150x58x1.5	150x58x2.0
	200x58x1.2	200x58x1.5	200x58x2.0
	250x58x1.2	250x58x1.5	250x58x2.0
Length (mm):	600 to 12000		
Intermediate measures:	Cutting Pitch 50 mm		
Material:	<ul style="list-style-type: none"> Raw Steel Thk. 2.0 and more Sendzimir Zinc Plated Steel Hot-Dip Galvanized Steel Thk. 2.0 mm Cor-Ten A Steel Thk. 2.0 mm (sec. 200 - 250) Stainless Steel AISI 304 or 316 Thk. 1.5 mm (sec. 200 - 250) 		
Features:	<ul style="list-style-type: none"> 50% perforation surface High structural rigidity Suitable for mezzanines, gangways and shelving panels Slip Resistance Rating R9 DIN 51130 		



SLIP RESISTANCE RATING
R9 DIN 51130 6° < a < 10° 

Type **Profile ZFR**

Available sections: W x H x THK (mm)	125x58x1.2	125x58x1.5	125x58x2.0
	200x58x1.2	200x58x1.5	200x58x2.0
	250x58x1.2	250x58x1.5	250x58x2.0
Length (mm):	600 to 12000		
Intermediate measures:	Cutting Pitch 50 mm		
Material:	<ul style="list-style-type: none"> Raw Steel Thk. 2.0 mm and more Sendzimir Zinc Plated Steel Hot-Dip Galvanized Steel Thk. 2.0 mm and more Cor-Ten A Steel Thk. 2.0 mm (sec. 200 - 250) Stainless Steel AISI 304 or 316 da Thk. 1.5 mm (sec. 200 - 250) 		
Features:	<ul style="list-style-type: none"> 35% perforation surface High structural rigidity Suitable for mezzanines and gangways Slip Resistance Rating R9 DIN 51130 		



SLIP RESISTANCE RATING
R9 DIN 51130 6° < a < 10° 



Type **Profile RSC**

Available sections: W x H x THK (mm)	200x58x1.2	200x58x1.5	200x58x2.0
	250x58x1.2	250x58x1.5	250x58x2.0
Length (mm):	600 to 12000		
Intermediate measures:	Cutting Pitch 50 mm		
Material:	<ul style="list-style-type: none"> Raw Steel Thk. 2.0 mm and more Sendzimir Zinc Plated Steel Hot-Dip Galvanized Steel Thk. 2.0 mm and more 		
Features:	<ul style="list-style-type: none"> High structural rigidity Suitable for mezzanines and gangways Profile used for carrying hand pallet trucks Slip Resistance Rating R9 DIN 51130 		



SLIP RESISTANCE RATING
R9 DIN 51130 6° < a < 10° 

Type **Profile RSC 3.0**

Available sections: W x H x THK (mm)	200x58x2.5	200x58x3.0
	250x58x2.5	250x58x3.0
Length (mm):	600 to 6000	
Intermediate measures:	Cutting Pitch 50 mm	
Material:	Sendzimir Zinc Plated Steel	
Features:	<ul style="list-style-type: none"> Profile in thickness 2.5 e 3.0 mm guarantees high performance and loading capacity Suitable for mezzanines and gangways Profile used for carrying hand pallet trucks Slip Resistance Rating R9 DIN 51130 	



SLIP RESISTANCE RATING
R9 DIN 51130 6° < a < 10° 

Type **Profile RSC/F**

Available sections: W x H x THK (mm)	200x58x1.2	200x58x1.5	200x58x2.0
	250x58x1.2	250x58x1.5	250x58x2.0
Length (mm):	600 to 12000		
Intermediate measures:	Cutting Pitch 50 mm		
Material:	<ul style="list-style-type: none"> Raw Steel Thk. 2.0 mm and more Sendzimir Zinc Plated Steel Hot-Dip Galvanized Steel Thk. 2.0 mm and more 		
Features:	<ul style="list-style-type: none"> High structural rigidity Suitable for mezzanines and gangways Profile used for carrying hand pallet trucks 5 mm holes for condensate drainage Slip Resistance Rating R9 DIN 51130 		



SLIP RESISTANCE RATING
R9 DIN 51130 6° < a < 10° 



Type **Profile ZB**

Available sections: W x H x THK (mm)	125x58x2.0	200x58x2.0	250x58x2.0
Length (mm):	600 to 12000		
Intermediate measures:	Cutting Pitch 50 mm		
Material:	<ul style="list-style-type: none"> Raw Steel Sendzimir Zinc Plated Steel Hot-Dip Galvanized Steel 		
Features:	<ul style="list-style-type: none"> High structural rigidity Suitable for mezzanines and gangways Slip Resistance Rating R9 DIN 51130 		



SLIP RESISTANCE RATING
R9 DIN 51130 6° < a < 10° 

Type **Profile ZBC**

Available sections: W x H x THK (mm)	125x58x1.5	125x58x2.0
	150x58x1.5	150x58x2.0
	200x58x1.5	200x58x2.0
	250x58x1.5	250x58x2.0
	/	300x58x2.0
Length (mm):	600 to 12000	
Intermediate measures:	Cutting Pitch 50 mm	
Material:	<ul style="list-style-type: none"> Raw Steel Thk. 2.0 mm Sendzimir Zinc Plated Steel Hot-Dip Galvanized Steel Thk. 2.0 mm and more 	
Features:	<ul style="list-style-type: none"> High structural rigidity Suitable for mezzanines and gangways Slip Resistance Rating R9 DIN 51130 	



SLIP RESISTANCE RATING
R9 DIN 51130 6° < a < 10° 





Type **Profile ZL**

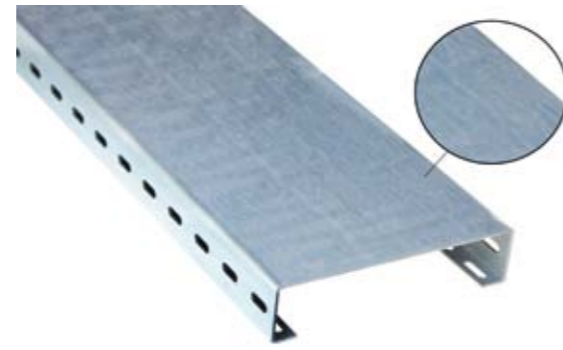
Available sections: W x H x THK (mm)	125x58x2.0	125x58x2.5	125x58x3.0
	150x58x2.0	/	150x58x3.0
	200x58x2.0	200x58x2.5	200x58x3.0
	250x58x2.0	250x58x2.5	250x58x3.0
	300x58x2.0	300x58x2.5	300x58x3.0

Length (mm): 600 to 12000
Thk. 3.0 mm max 6000mm

Intermediate measures: Cutting Pitch 50 mm

Material: Sendzimir Zinc Plated Steel

- Features:**
- High structural rigidity
 - Suitable for mezzanines **ONLY** if covered with antislip material
 - Suitable for floor coverings like carpets, lino floors, chipboard, plywood and laminated plastic coverings Thk. 1.5 mm



Type **Profile ZA**

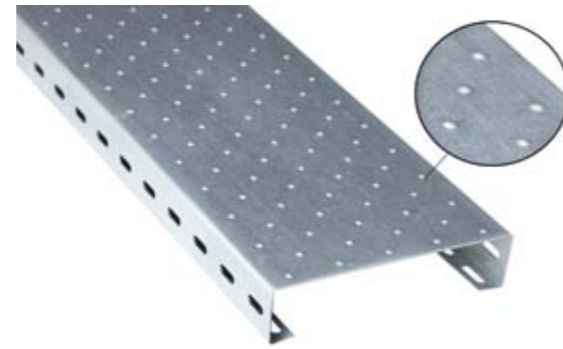
Available sections: W x H x THK (mm)	125x58x2.0	125x58x2.5	125x58x3.0
	150x58x2.0	/	150x58x3.0
	200x58x2.0	200x58x2.5	200x58x3.0
	250x58x2.0	250x58x2.5	250x58x3.0
	300x58x2.0	300x58x2.5	300x58x3.0

Length (mm): 600 to 12000
Thk. 3.0 mm max 6000mm

Intermediate measures: Cutting Pitch 50 mm

Material: Sendzimir Zinc Plated Steel

- Features:**
- High structural rigidity
 - Suitable for mezzanines, the "punctioned" surface assures the anti-slip effect for pedestrian use
 - Suitable for floor coverings like carpets, lino floors, chipboard, plywood and laminated plastic coverings
 - Slip Resistance Rating **R9 DIN 51130**.



SLIP RESISTANCE RATING
R9 DIN 51130 6° < a < 10°



Type **Profile LB**

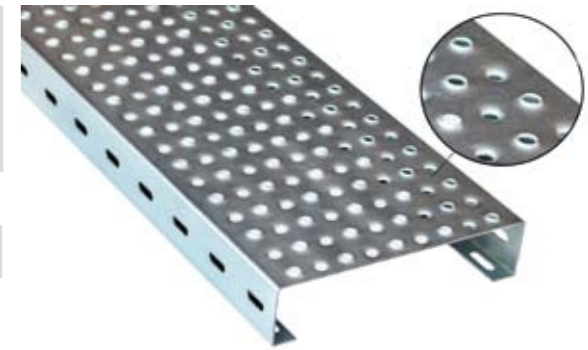
Available sections: W x H x THK (mm)	/	/	150x58x3.0*
	200x58x2.0	200x58x2.5	200x58x3.0
	250x58x2.0	250x58x2.5	250x58x3.0
	300x58x2.0	300x58x2.5	300x58x3.0

Length (mm): 600 to 6000

Intermediate measures: Cutting Pitch 60 mm

- Material:**
- Raw Steel Thk. 2.0 mm
 - Sendzimir Zinc Plated Steel
 - Hot-Dip Galvanized Steel Thk. 2.0 mm and more
 - Cor-Ten A Steel Thk. 2.0 or 3.0 mm (sec. 150)
 - Stainless Steel AISI 304 or 316 Thk. 1.5 or 2.0 mm
 - Aluminium Alloy Peraluman 5754 H111 Thk. 2.5 mm

- Features:**
- Embossed perforated surface for profile stiffening
 - Ø8mm perforation in upward direction guarantees the anti-slip effect. Towards perforation guarantees the atmospheric agents drainage
 - Suitable for cycle and pedestrian walkways, wheelchair ramps, mezzanines and technical application/gangways
 - Slip Resistance Rating **R12 DIN 51130**
 - Slip Resistance Rating Cor-Ten A **R13 DIN 51130**
- * Available with or without winglet eyelets.
Without winglet eyelets - best performances



SLIP RESISTANCE RATING
R12 DIN 51130 27° < a < 35°

COR-TEN A VERSION
R13 DIN 51130 a > 35°

Type **Profile GE**

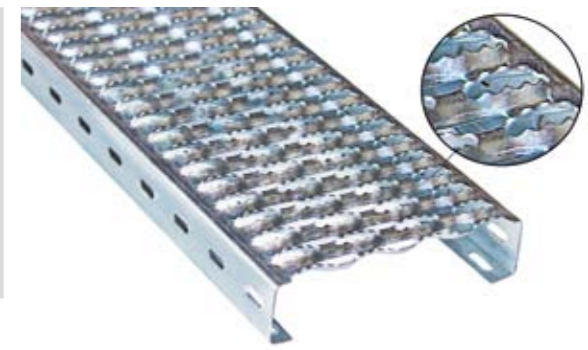
Available sections: W x H x THK (mm)	/	125x58x2.0
	200x58x1.5	200x58x2.0
	250x58x1.5	250x58x2.0
	300x58x1.5	300x58x2.0
	/	350x58x2.0
	/	400x58x2.0
/	500x58x2.0	

Length (mm): 600 to 12000

Intermediate measures: Cutting Pitch 60 mm

- Material:**
- Raw Steel Thk. 2.0 mm and more
 - Sendzimir Zinc Plated Steel Thk. 2.0 and more
 - Cor-Ten A Steel Thk. 2.0 mm (sec.200 and more)
 - Stainless Steel AISI 304 or 316 Thk. 1.5 or 2.0 mm (sec.200 - 250 - 300)
 - Aluminium Alloy 5754 H111 Thk. 2.5 mm (sec.200 and more)

- Features:**
- High structural rigidity
 - Suitable for technical application/gangways
 - 40% perforation surface
 - Slip Resistance Rating **R12 DIN 51130**



SLIP RESISTANCE RATING
R12 DIN 51130 27° < a < 35°



Type **Profile XB**

Available sections: W x H x THK (mm)	200x58x1.5	200x58x2.0	200x58x2.5
	250x58x1.5	250x58x2.0	250x58x2.5
	/	300x58x2.0	300x58x2.5

Length (mm):	600 to 12000
Intermediate measures:	Cutting Pitch 60 mm

- Material:**
- Raw Steel Thk. 2.0 mm and more
 - Sendzimir Zinc Plated Steel
 - Hot-Dip Galvanized Steel Thk. 2.0 mm and more
 - Cor-Ten A Steel Thk. 2.0 mm and more
 - Stainless Steel AISI 304 or 316 Thk. 1.5 or 2.0 mm
 - Aluminium Alloy Peraluman 5754 H111 Thk. 2.5 mm

- Features:**
- Embossed surface for best rigidity
 - The "punctioned" surface assures the anti-slip effect
 - Suitable for cycle and pedestrian walkways, wheelchair ramps, mezzanines and technical applications/gangways
 - Slip Resistance Rating **R11 DIN 51130**



SLIP RESISTANCE RATING
R11 DIN 51130 19° < a < 27° 

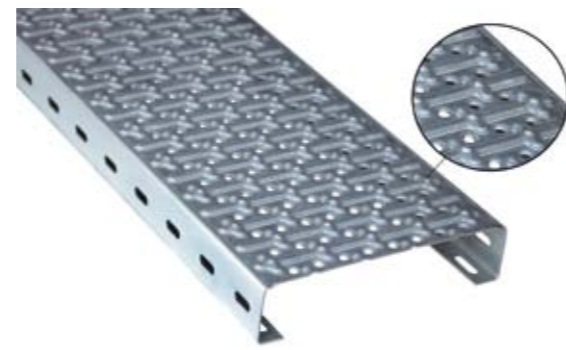
Type **Profile XF**


Available sections: W x H x THK (mm)	200x58x1.5	200x58x2.0	200x58x2.5
	250x58x1.5	250x58x2.0	250x58x2.5
	/	300x58x2.0	300x58x2.5

Length (mm):	600 to 12000
Intermediate measures:	Cutting Pitch 60 mm

- Material:**
- Raw Steel Thk. 2.0 mm and more
 - Sendzimir Zinc Plated Steel
 - Hot-Dip Galvanized Steel Thk. 2.0 mm and more
 - Cor-Ten A Steel Thk. 2.0
 - Stainless Steel AISI 304 or 316 Thk. 1.5 or 2.0 mm
 - Aluminium Alloy Peraluman 5754 H111 Thk. 2.5 mm

- Features:**
- Embossed surface for best rigidity
 - The "punctioned" surface assures the anti-slip effect, Ø8mm perforation guarantees atmospheric agents drainage
 - Suitable for cycle and pedestrian walkways, wheelchair ramps, mezzanines and technical applications/gangways
 - Slip Resistance Rating **R10 DIN 51130**
 - Slip Resistance Rating Cor-ten A **R11 DIN 51130**



SLIP RESISTANCE RATING
R10 DIN 51130 10° < a < 19°
COR-TEN A VERSION
R11 DIN 51130 19° < a > 27° 



ACCESSORIES H58

Compensation ZL



Head cover 40x60x40



"L" shaped Toe board 30x200x30



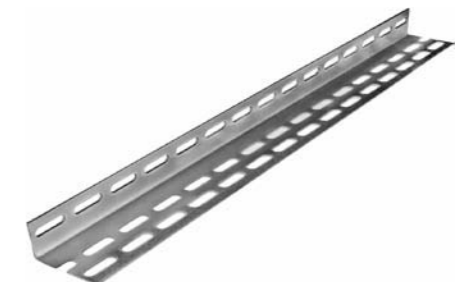
Linear Toe board 210x32



Angle bracket 30x30x2



Perforated Angle bracket 60x40





ACCESSORIES H58

Reinforced joint



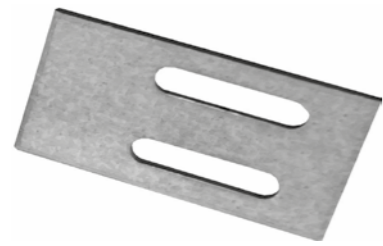
Simple joint 50x300 (P50)



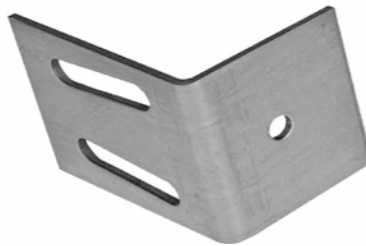
Reinforcement Plate (P50)



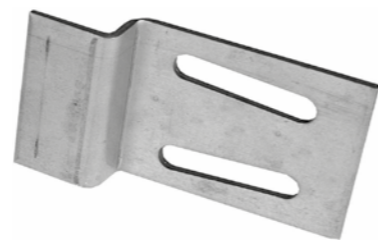
Open beam plane bracket



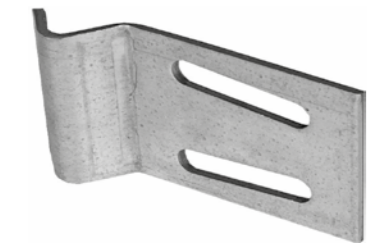
Side anchoring bracket



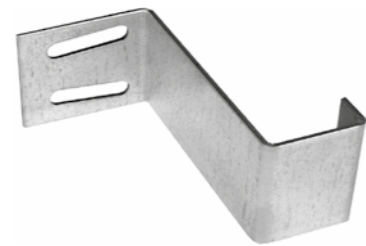
Open beam anchoring bracket



Sigma-ZL anchoring bracket



Tubular beam anchoring bracket



Pressure anchorage



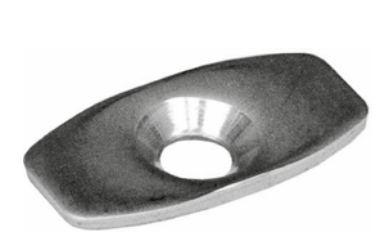
Joint 50x360 (P60)



Notched bar (P60)



Stainless steel Ogive Profile GE



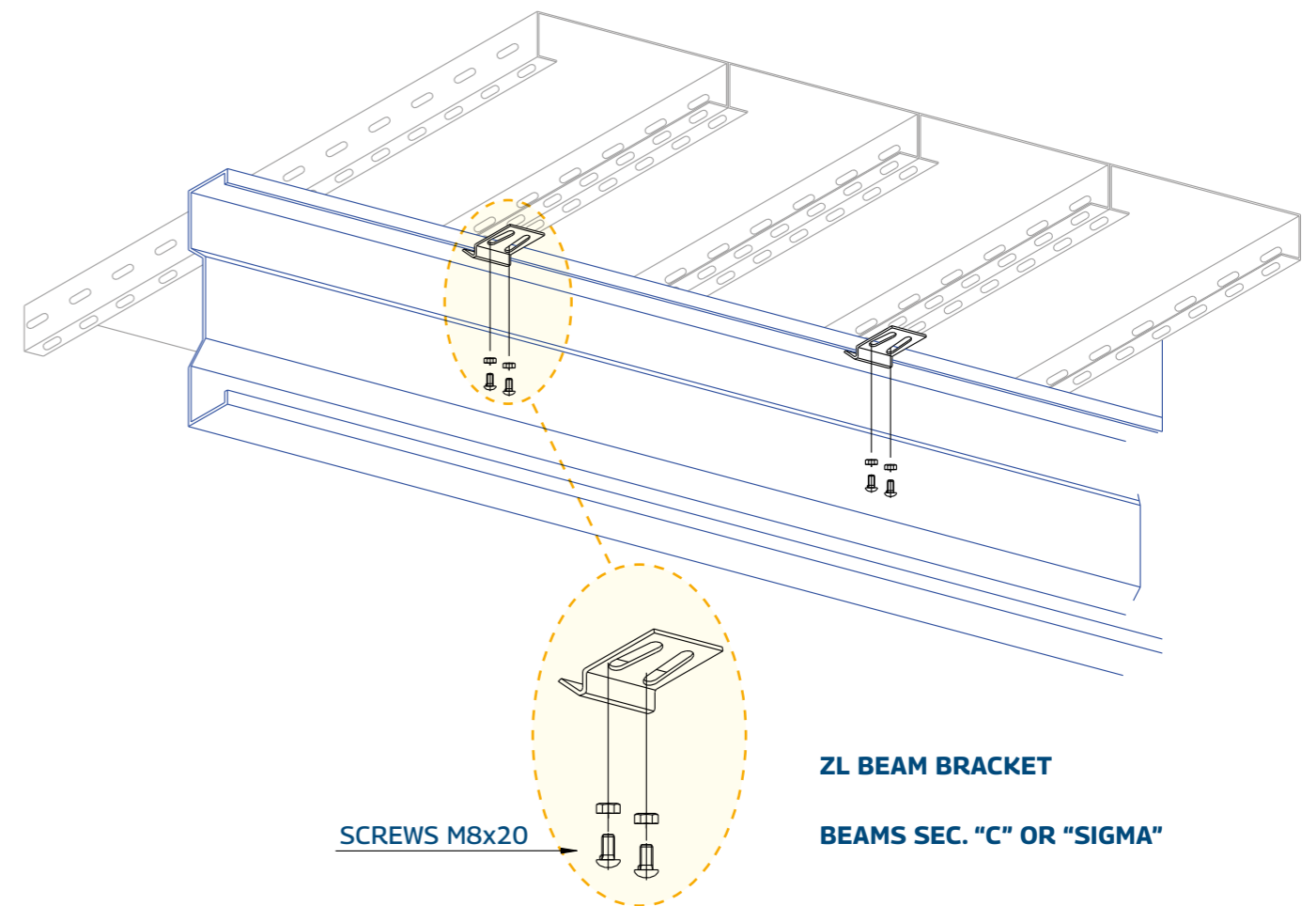
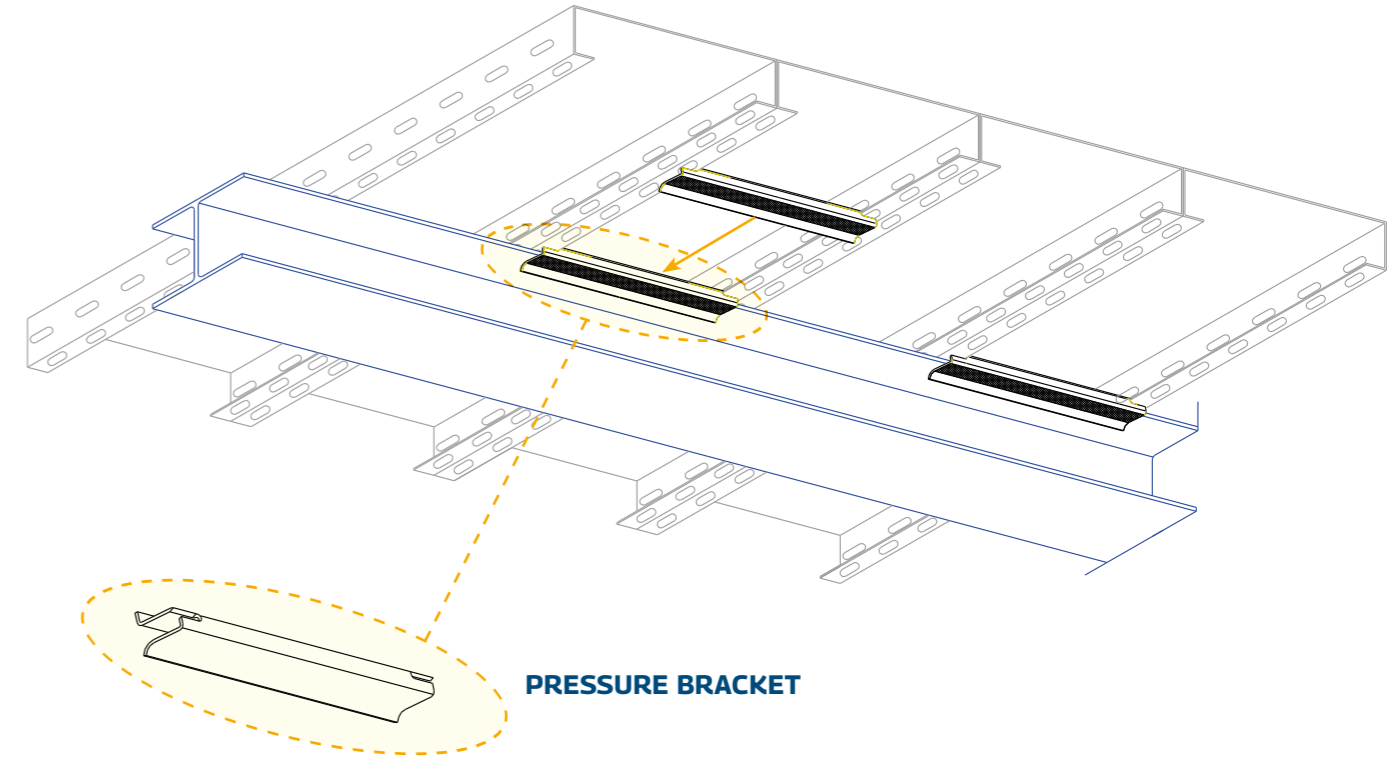
PVC die-cast Ogive Profile GE



Bolt

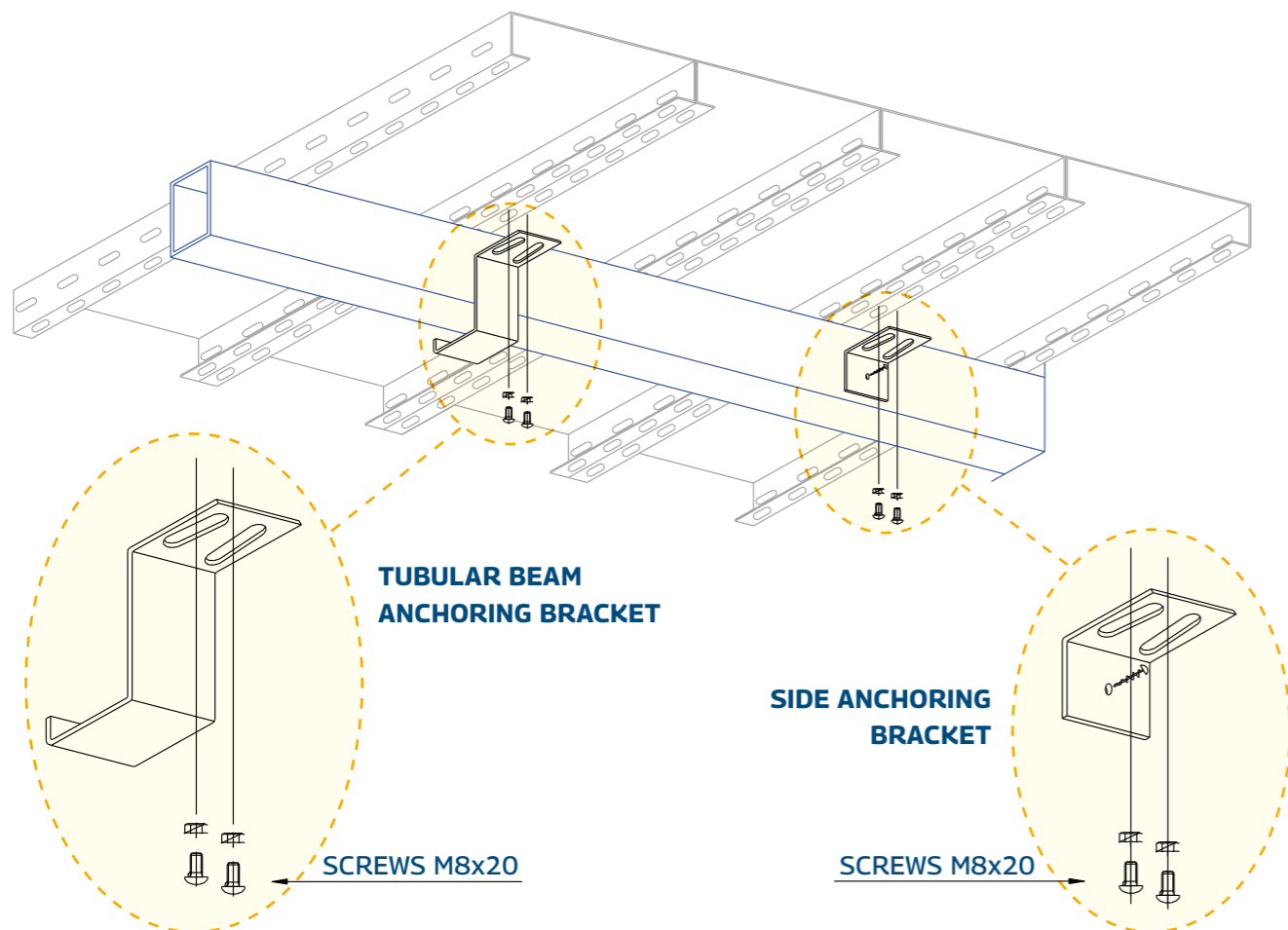
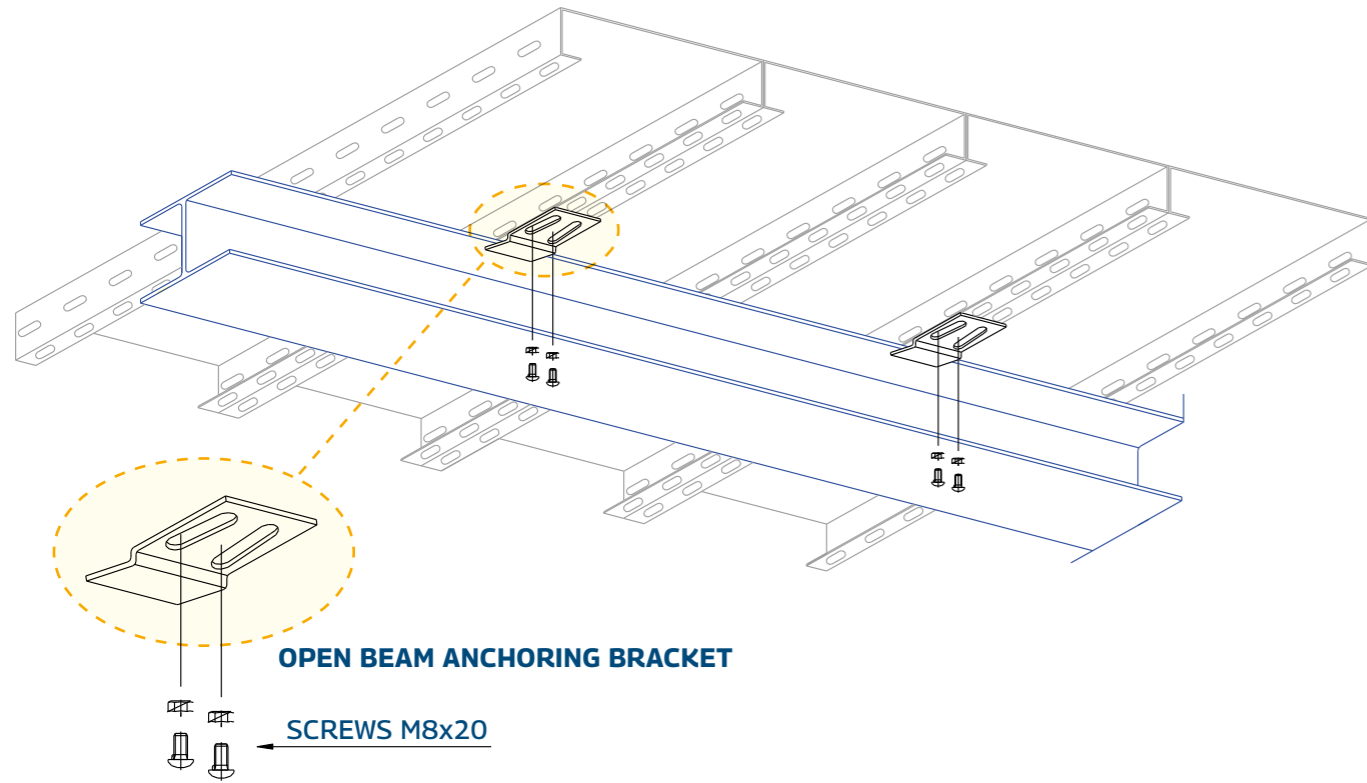


ANCHORING SYSTEMS

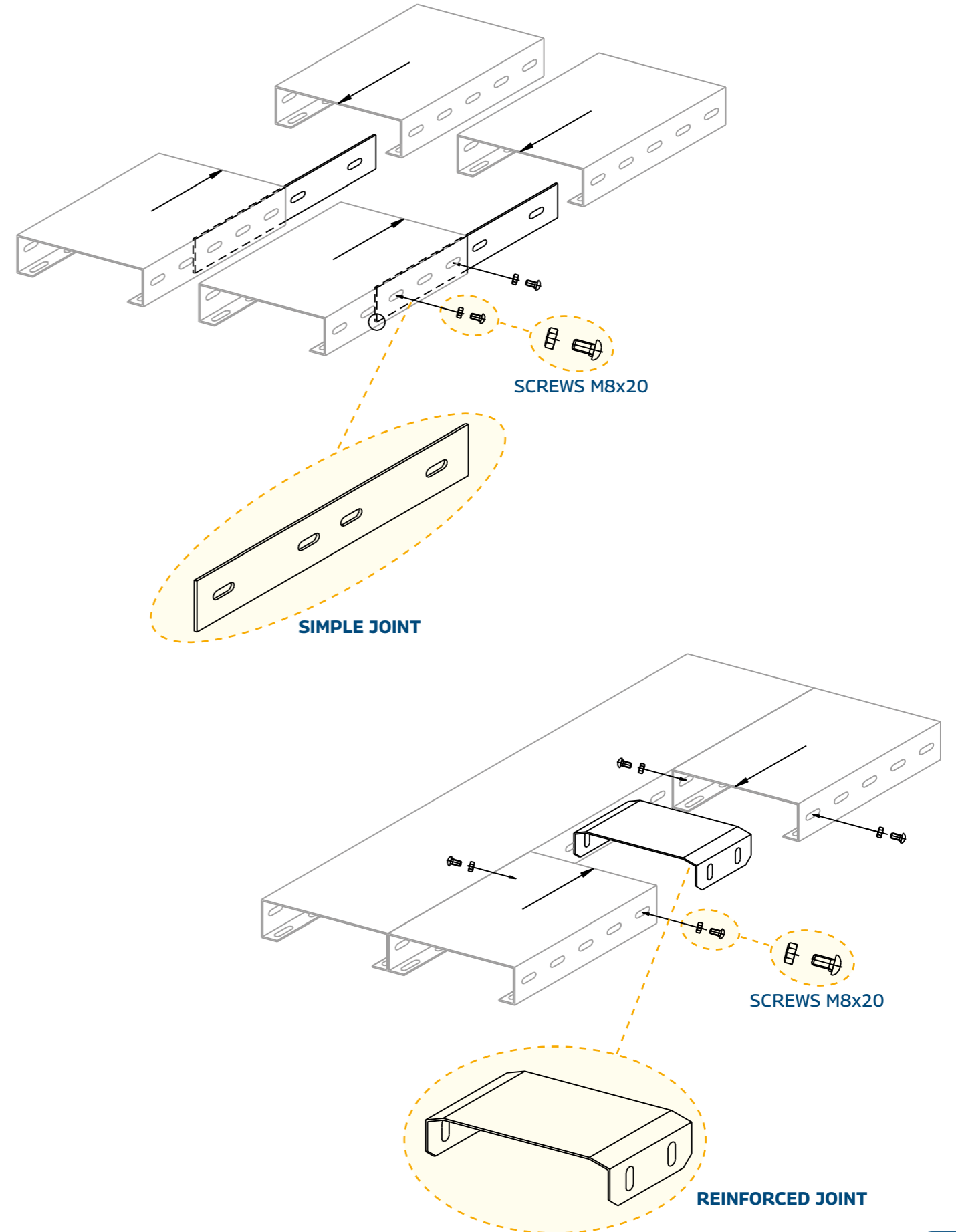




ANCHORING SYSTEMS



HEAD JOINTS



Type **Step GF**

Available sections: W x H x THK (mm)	150x58x2.0	/	150x58x3.0
	200x58x2.0	/	/
	250x58x2.0	250x58x2.5	/
	300x58x2.0	300x58x2.5	/
	325x58x2.0	325x58x2.5	/

Length (mm): 600 to 9000**Intermediate measures:** Cutting Pitch 50 mm**Material:**

- Raw Steel
- Sendzimir Zinc Plated Steel
- Hot-Dip Galvanized Steel
- Cor-Ten A Steel Thk 2.0 mm (sec. 250 - 300) or 3.0 mm (sec. 150)
- Stainless Steel AISI 304 or 316 Tkh. 1.5 or 2.0 mm (sec. 250 - 300)
- Aluminium Alloy Peraluman 5754 H111 Thk. 2.5 mm (sec. 250 -300)

Features:

- Anti-panic surface, excellent anti-slip grip
- Fast atmospheric agents draining
- Suitable for gangways and fire escapes
- Slip Resistance Rating **R11 DIN 51130**

SLIP RESISTANCE RATING
R11 DIN 51130 19° <math>a < 27^\circ</math>Type **Step ZB2**

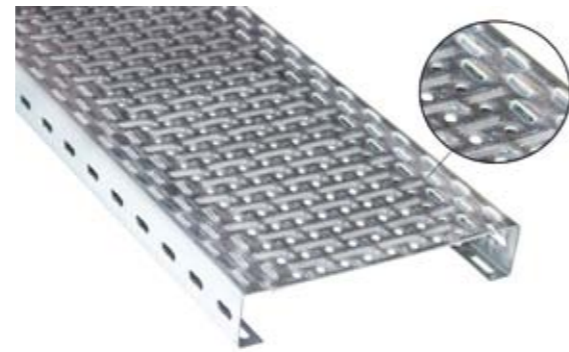
Available sections: W x H x THK (mm)	250x58x2.0	250x58x2.5
	300x58x2.0	300x58x2.5
	325x58x2.0	325x58x2.5

Length (mm): 600 to 9000**Intermediate measures:** Cutting Pitch 50 mm**Material:**

- Raw Steel
- Sendzimir Zinc Plated Steel
- Hot-Dip Galvanized Steel
- Cor-Ten A Steel Thk. 2.0 mm (sec.250 - 300)

Features:

- Anti-panic surface with Ø8mm holes
- Fast atmospheric agents draining
- Anti-slip on both sides
- Slip Resistance Rating **R9 DIN 51130**

SLIP RESISTANCE RATING
R9 DIN 51130 6° <math>a < 10^\circ</math>Type **Step ZBC**

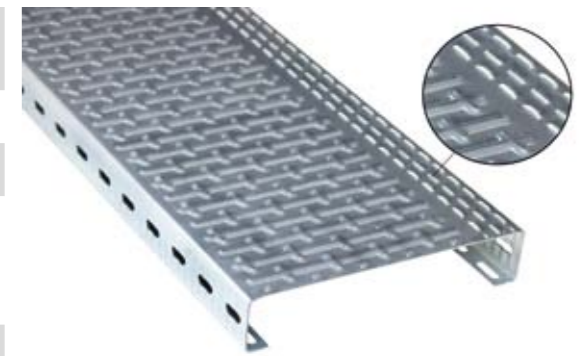
Available sections: W x H x THK (mm)	150x58x2.0	200x58x2.0
	250x58x2.0	300x58x2.0

Length (mm): 600 to 6000**Intermediate measures:** Cutting Pitch 50 mm**Material:**

- Raw Steel
- Sendzimir Zinc Plated Steel
- Hot-Dip Galvanized Steel

Features:

- Embossed closed surface
- Anti-slip effect on one side
- Suitable for internal steps
- Slip Resistance Rating **R9 DIN 51130**

SLIP RESISTANCE RATING
R9 DIN 51130 6° <math>a < 10^\circ</math>Type **Step GB2**

Available sections: W x H x THK (mm)	300x58x2.0
---	------------

Length (mm): 600 to 9000**Intermediate measures:** Cutting Pitch 50 mm**Material:**

- Raw Steel
- Sendzimir Zinc Plated Steel
- Hot-Dip Galvanized Steel

Features:

- Embossed closed surface
- Anti-slip effect on both side
- Suitable for internal steps
- Slip Resistance Rating **R9 DIN 51130**

SLIP RESISTANCE RATING
R9 DIN 51130 6° <math>a < 10^\circ</math>Type **Step GXB**

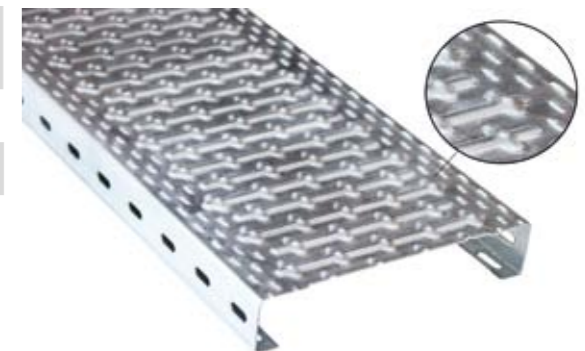
Available sections: W x H x THK (mm)	250x58x2.0	250x58x2.5
	300x58x2.0	300x58x2.5

Length (mm): 600 to 9000**Intermediate measures:** Cutting Pitch 60 mm**Material:**

- Raw Steel
- Sendzimir Zinc Plated Steel
- Hot-Dip Galvanized Steel
- Cor-Ten A Steel Thk. 2.0 mm
- Stainless Steel AISI 304 or 316 Thk. 2.0 mm (sec. 250 - 300)
- Aluminium Alloy Peraluman 5754 H111 Thk. 2.5 mm

Features:

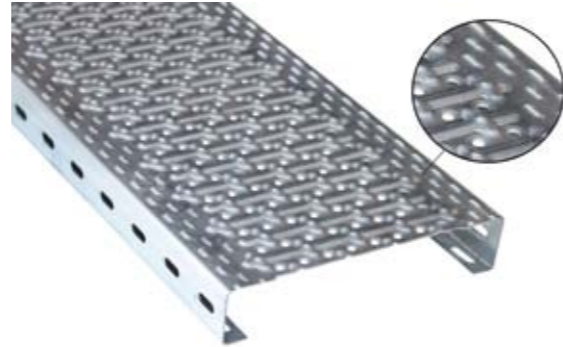
- Embossed surface for best profile stiffening
- The "punctioned" surface assures the anti-slip effect
- Suitable for internal technical applications
- Slip Resistance Rating **R11 DIN 51130**

SLIP RESISTANCE RATING
R11 DIN 51130 19° <math>a < 27^\circ</math>



Type Step GXF

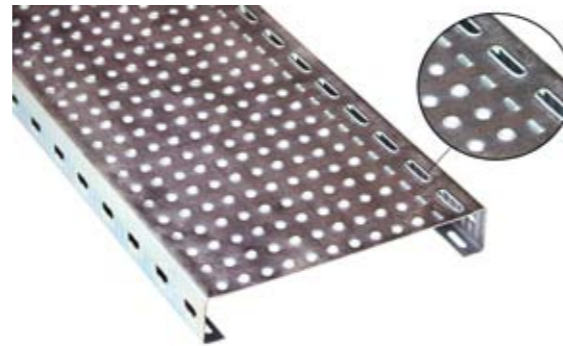
Available sections: W x H x THK (mm)	250x58x2.0	250x58x2.5
	300x58x2.0	300x58x2.5
Length (mm):	600 to 9000	
Intermediate measures:	Cutting Pitch 60 mm	
Material:	▪ Raw Steel Thk. 2.0 mm and more	
	▪ Sendzimir Zinc Plated Steel	
	▪ Hot-Dip Galvanized Steel	
	▪ Cor-Ten A Steel Tkh. 2.0 mm	
	▪ Stainless Steel AISI 304 or 316 Tkh. 2.0 mm	
	▪ Aluminium Alloy Peraluman 5754 H111 Thk. 2.5 mm	
Features:	▪ Embossed surface for best rigidity	
	▪ The "punctioned" surface assures the anti-slip effect, Ø8mm perforation guarantees atmospheric agents drainage	
	▪ Suitable for fire escapes and service stairs	
	▪ Slip Resistance Rating R11 DIN 51130	



SLIP RESISTANCE RATING
R11 DIN 51130 19° < a < 27° 



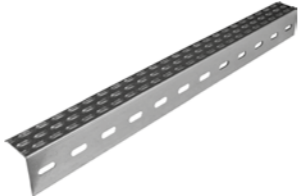

Type Step GLB

Available sections: W x H x THK (mm)	325x58x2.0	325x58x2.5
	600 to 6000	
Length (mm):	600 to 6000	
Intermediate measures:	Cutting Pitch 60 mm	
Material:	▪ Raw Steel	
	▪ Sendzimir Zinc Plated Steel	
	▪ Hot-Dip Galvanized Steel	
Features:	▪ Perforated surface for profile stiffening	
	▪ The perforation, in upward direction, guarantees the anti-slip effect. Towards perforation guarantees the atmospheric agents drainage	
	▪ Suitable for cycle and pedestrian walkways, wheelchair ramps, mezzanines and technical application/gangways	
	▪ Slip Resistance Rating R12 DIN 51130	



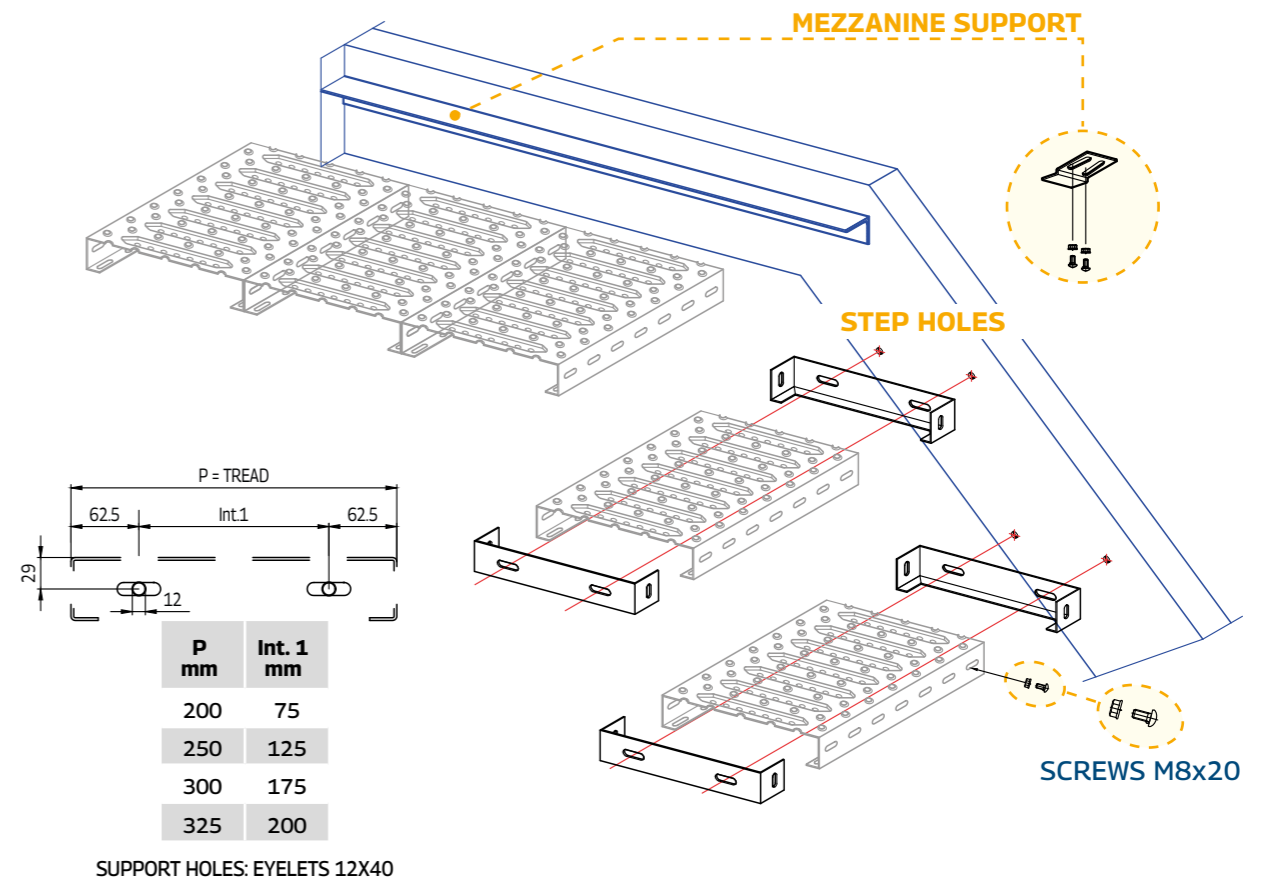
SLIP RESISTANCE RATING
R12 DIN 51130 27° < a < 35° 

STEP ACCESSORIES H58

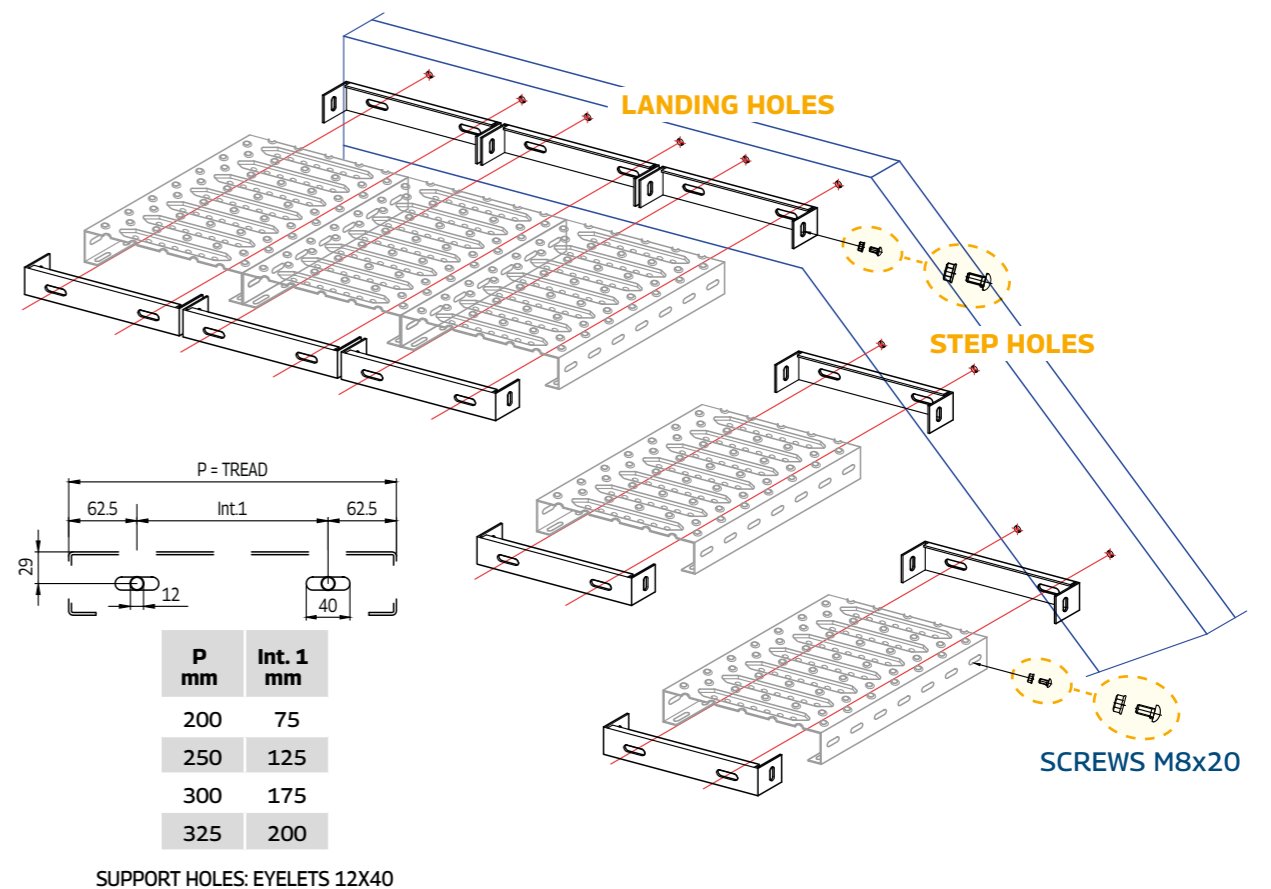
Internal Reinforced Bracket	External Bracket	Anti-slip front step panel	Front step panel AV36 vernished Yellow RAL 1003
			



SCHEME A1



ALTERNATIVES FOR STAIR LANDINGS





Type **Step GF250TS**

Available sections: W x H x THK (mm)	250x58x2.0	
Length (mm):	800 to 1000	
Intermediate measures:	Contact our Technical Department	
Material:	<ul style="list-style-type: none"> Raw Steel Hot-Dip Galvanized Steel 	
Features:	<ul style="list-style-type: none"> Anti-panic effect, excellent anti-slip grip on both directions Fast atmospheric agents draining Suitable for fire escapes and gangways CE MARKING 1090-1: EXC2 Slip Resistance Rating R11 DIN 51130 	



SLIP RESISTANCE RATING
R11 DIN 51130 19° < a < 27°

Type **Step GF300TS - Step GF325TS**

Available sections: W x H x THK (mm)	300x58x2.0	300x58x2.5	325x58x2.0	325x58x2.5
Length (mm):	1000 - 1200 - 1500 - 1800			
Intermediate measures:	Contact our Technical Department			
Material:	<ul style="list-style-type: none"> Raw Steel Hot-Dip Galvanized Steel 			
Features:	<ul style="list-style-type: none"> Anti-panic effect, excellent anti-slip grip on both directions Fast atmospheric agents draining Suitable for fire escapes and gangways CE MARKING 1090-1: EXC2 or EXC3 Slip Resistance Rating R11 DIN 51130 			



SLIP RESISTANCE RATING
R11 DIN 51130 19° < a < 27°

Type **Step GF300/2400TS - Step GF325/2400TS**

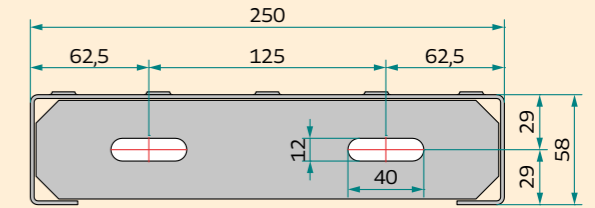
Available sections: W x H x THK (mm)	300x83x2.5	325x83x2.5
Length (mm):	2400	
Intermediate measures:	Not available	
Material:	<ul style="list-style-type: none"> Raw Steel Hot-Dip Galvanized Steel 	
Features:	<ul style="list-style-type: none"> Anti-panic effect, excellent anti-slip grip on both directions, Fast atmospheric agents draining Suitable for fire escapes and gangways CE MARKING 1090-1: EXC2 Slip Resistance Rating R11 DIN 51130 	



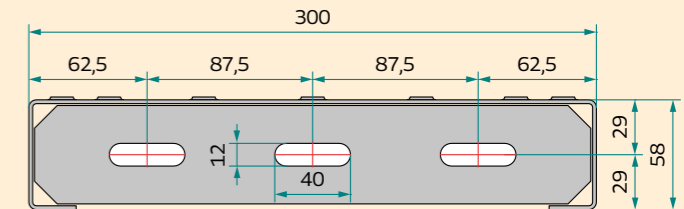
SLIP RESISTANCE RATING
R11 DIN 51130 19° < a < 27°



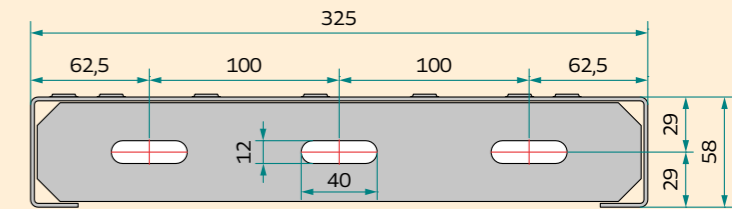
Head GF250 H58



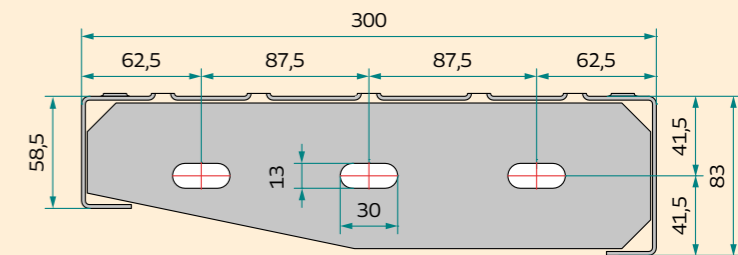
Head GF300 H58



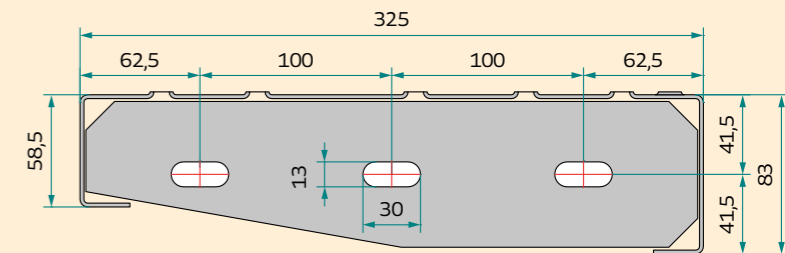
Head GF325 H58



Head GF300 H83



Head GF325 H83



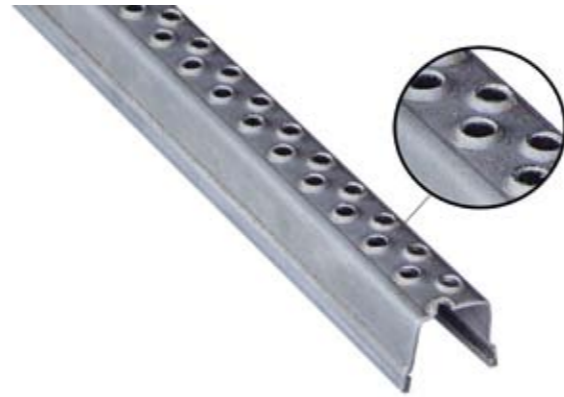
AVAILABLE MEASURES								
Section mm	Height h	Thickness mm	Standard Lengths (mm)					
			800	1000	1200	1500	1800	2400
Raw Steel S235JR (Weight kg/pc.)								
250	58	2	5,76	6,98	/	/	/	/
300	58	2	/	7,92	9,18	/	/	/
325	58	2	/	/	9,95	/	/	/
300	58	2.5	/	/	/	13,80	17,03	/
325	58	2.5	/	/	/	14,65	18,06	/
300	83	2.5	/	/	/	/	/	29,13
325	83	2.5	/	/	/	/	/	30,57

Hot-Dip Galvanized version (UNI EN ISO 1461 dd July 2009) due to the treatment, the profiles weight increases by 8% averagely



Type Rung 25x25

Available sections: W x H x THK (mm)	25x25x1.5
Length (mm):	2000
Material:	Raw Steel S235JR (10 pcs rods packages)
Features:	<ul style="list-style-type: none"> ▪ Suitable for fruit and vegetable use and cage ladders ▪ Ladders for lattice tower and silo maintenance access ▪ Ladders for heavy equipment/machinery and tanker trucks ▪ Reinforced structure ▪ Slip Resistance Rating R11 DIN 51130



SLIP RESISTANCE RATING
R11 DIN 51130 19° < a > 27°  R11

Type Rung 25x30

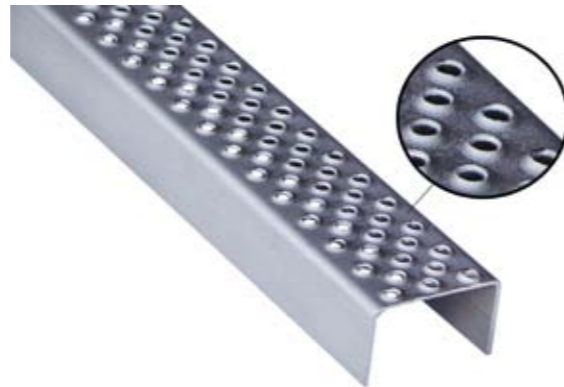
Available sections: W x H x THK (mm)	25x30x1.5	25x30x2.0
Length (mm):	2000	
Material:	<ul style="list-style-type: none"> ▪ Raw Steel Thk. 2.0 mm S235JR (10 pcs rods packages) ▪ Stainless Steel AISI 304 or 316 Thk. 1.5 mm ▪ Aluminium Alloy Peraluman 5754 H111 Thk. 2.0 mm 	
Features:	<ul style="list-style-type: none"> ▪ Ladders for technical use ▪ Ladders for lattice tower and silo maintenance access ▪ Ladders for heavy equipment and tanker trucks ▪ Available in Raw Steel, Stainless Steel AISI 304-316 and Aluminium Alloy Peraluman 5754 H111 ▪ Slip Resistance Rating R11 DIN 51130 	



SLIP RESISTANCE RATING
R11 DIN 51130 19° < a > 27°  R11

Type Rung 50x34

Available sections: W x H x THK (mm)	50x34x2.0
Length (mm):	2000
Material:	Raw Steel S235JR
Features:	<ul style="list-style-type: none"> ▪ Ladder for technical use ▪ Ladders for lattice tower and silo maintenance access ▪ Ladders for heavy equipment and tanker trucks ▪ Enlarged base tread ▪ Slip resistance Rating R11 DIN 51130



SLIP RESISTANCE RATING
R11 DIN 51130 19° < a > 27°  R11



Abagrigliati s.r.l. Unipersonale

Via dell'Artigianato, 10
35010 Massanzago, Padova - Italy
Tel. +39 049 5797535
Fax +39 049 5797860
www.abagrigliati.it
info@abagrigliati.it



www.abagrigliati.it