



abaGRIGLIATI

*Forging ideas since 1975*

PRODUCTS CATALOGUE  
2025



## Experience shaped by time

### Industrial solidity and vision: a passion born in 1975.

A long activity made of passion and commitment, started in 1975 by Lionello Bortolato who, just over twenty years old, opened his own business and specialized in the production of industrial shelving, subsequently concentrating on the production of components for shelving and more advanced storage systems, focusing on metal profiles for gangways and mezzanines. The company's rapid growth required the construction of its first new factory in Massanzago (Padua province) in 1990. At the end of the 1990s, the company, by now known as ABA, expanded, the workforce became more qualified and the machinery used more and more advanced. The company established itself on the market for its reliability, quality, speed and punctuality of deliveries, but above all for its policy of personalising its products, which were made to measure and capable of integrating safety and functionality. In 2005, there was a change of company; Abagrigliati was born and the handover to the second generation opened a new chapter in its history of innovation and development. Attention and care for details led to the construction of the new logistics warehouse in 2010, bringing the covered area to 8000 sqm.



## A world under your feet

### Advice and customisation for high performance security.

People entrust us with their most precious asset: their security. For this reason, our work is not limited to the supply of what they need, but is the result of many activities that see our constant presence at the customer's side to give them all the reliability they deserve. The technical expertise of our team and the constant updating on regulations allow us to recommend the right product and to provide the best

service and the most suitable material for each requirement, and to study customized and absolutely unique solutions, even for more complex and unusual applications. After careful evaluation of the request, our technical department identifies the most suitable solutions to meet quality and safety requirements. We then proceed to develop the solutions and CE mark all products, which are then certified and accompanied by the relevant technical documentation, with very fast delivery times.

## We exceed your expectations!

### Flexibility and research to add value to every space.

The ability to create highly flexible, functional and efficient solutions allows us to present ourselves on the market today with a distinctive identity and know-how strongly oriented towards customization. A dynamic and creative production, the highest expression of "made-to-measure", able to satisfy every day the most particular requests of our customers. Ideas are shaped to create innovative products and offer solutions that give the right value to the work of others.

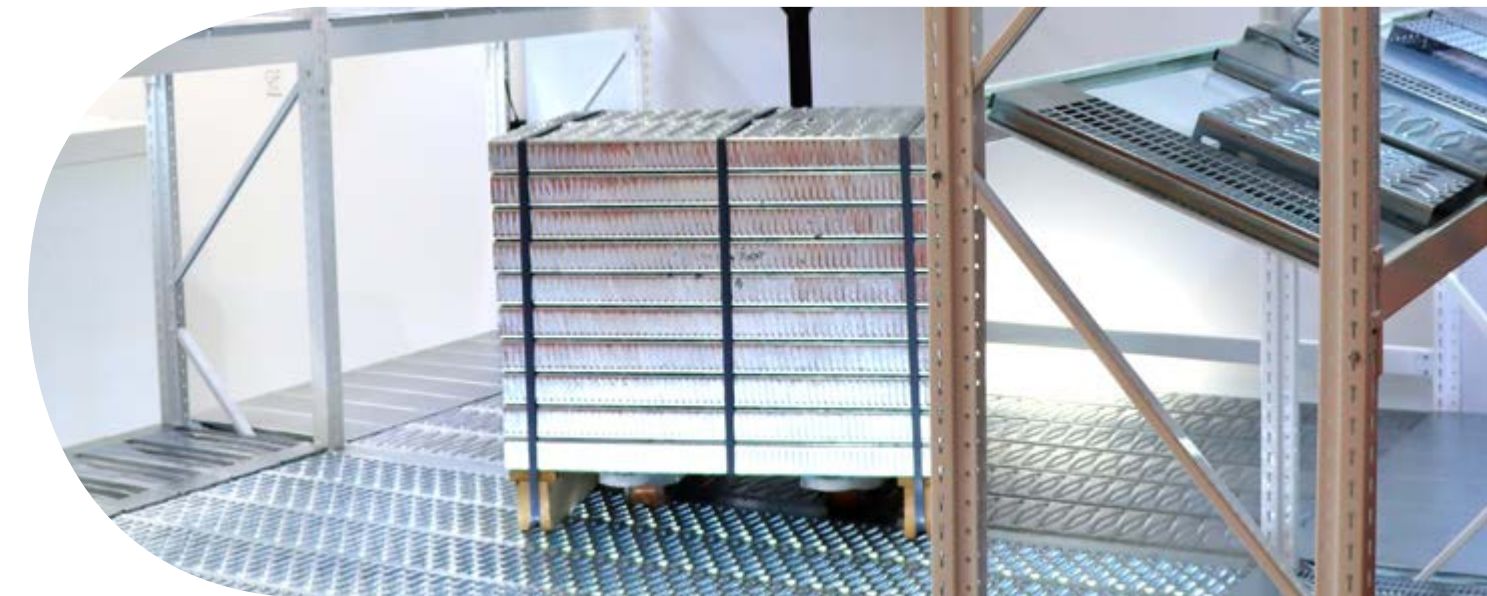
In this context, important milestones for our company are included, the result of constant teamwork, which has made us a reference point in the production of metal profiles. An example of this is the compliance with the European regulation 305/2011 for the CE marking 1090- 1 EXC3 for steel and aluminium profiles, but also the anti-



slip certifications obtained from tests carried out at a certified laboratory and the load-bearing capacity tests carried out at the Experimental Laboratory for tests on construction materials of the ICEA department (University of Padua).

Welding operations also follow the UNI EN 3834-2 standard.

Our primary goal is the satisfaction of not only our customers, but also of those who work with us, through the continuous improvement of all company processes and the careful and scrupulous management of quality, health, safety and environmental issues. For this reason, in addition to the certifications, we follow the UNI INAIL guidelines and the 231 model for Corporate Administrative Responsibility.



# If it doesn't exist, we create it!

## Between functionality and aesthetics, always the best choice.

Profiles can be used in many different areas, from construction to industry, from agriculture to logistics. Their structural lightness and high load-bearing capacity make them a functional element for covering platforms and shelves, and at the same time an aesthetically pleasing element, appreciated by architects and builders as a decorative detail.

Each element must be designed and manufactured by carefully assessing the use and environmental conditions in which it is placed, which is why it is essential to guarantee a complete variety of products, always in step with specific requirements and current regulations.

## A comprehensive range and a consultative approach to guide you step by step towards your goal.

The choice of the most suitable product among those in the catalogue must necessarily go hand in hand with the customisation of the workmanship and the choice of the right material, because every request is never the same. We love challenges and seeing satisfaction in the eyes of our customers, which is why we always put our utmost effort into interpreting their needs in a concrete manner and giving form to what does not exist, offering a product that encompasses all the characteristics of safety, solidity, maximum performance and the ability to last over time.



### FLOORING PROFILES

A wide selection of profiled sheet metal gratings with special reliefs and surface perforations for walkways and walkway surfaces of all kinds. Depending on the application, each process guarantees high structural rigidity, slip resistance, heel resistance, high load-bearing capacity, structural lightness and perfect stability.



### STEPS AND RUNGS

The most refined workmanship and the best materials including Sendzimir galvanized steel, raw or hot-dip galvanized steel, AISI304 or AISI316 stainless steel, 5754 H111 aluminium alloy and Cor-Ten steel, to create structures of the highest reliability and durability, with a high anti-slip grip. Our stair treads strike the right balance between aesthetics and functionality and, thanks to the special surface treatment that makes them suitable for both indoor and outdoor use, as well as highly resistant to wear and tear and time, they require no maintenance.



### RACKING COMPONENTS

Racking components that combine versatility and strength. Made from high-quality materials, like flooring and step profiles, our shelves are designed to suit a wide variety of applications, ensuring durability and safety in any environment. Whether you need solutions for warehouses, offices, or stores, our flatbeds offer the flexibility to meet your specific needs, taking advantage of different heights and types of drilling (and non-drilling) on the surface.



### SPECIALS

The ability to evaluate the most suitable profile for the request made to us and to adapt or integrate it into the individual project is the strength of our technical department. Through a feasibility study, we select the product that is functional to the objectives set with the client, always offering the perfect mix of loading capacity, safety, durability, aesthetics and ease of assembly.

# Index

## FLOORING PROFILES

PERFORATED PROFILES H58 P40 - P50 (Types: RSA - GP - ZFR)	Page	7
HAND PALLET TRUCK PROFILES H58 P50 (Types: RSC - RSC 3.0 - RSC/F)	Page	8
EMBOSSSED CLOSED PROFILES H58 P50 (Types: ZB - ZBC - ZL - ZA)	Page	9-10
EMBOSSSED PERFORATED PROFILES H58 P60 (Types: LB - GE)	Page	11
EMBOSSSED CLOSED AND PERFORATED PROFILES H58 P60 (Types: XB - XF)	Page	12
ACCESSORIES H58	Page	13-14
ANCHORAGE SCHEMES - ANCHORAGE SYSTEMS	Page	15-16
ANCHORAGE SCHEMES - HEAD JOINTS	Page	17

## PROFILES FOR STEPS AND RUNGS

EMBOSSSED PERFORATED STEPS H58 P50 (Types: GF - ZB2)	Page	19
EMBOSSSED CLOSED STEPS H58 P50 P60 (Types: ZBC - GB2 - GXB)	Page	20
EMBOSSSED PERFORATED STEPS H58 P60 (Types: GXF-GLB)	Page	21
ANCHORAGE SCHEMES	Page	22
RUNGS	Page	23
WELDED HEADS GF STEPS (Types: GF250TS - GF300TS - GF325TS - GF300/2400TS - GF325/2400TS)	Page	24
TECHNICAL DATA SHEET FOR WELDED HEADS	Page	25

## RACKING COMPONENTS

PROFILES FOR LEVELS H29 (Types: PL - PB - PFR)	Page	27
ACCESSORIES H29	Page	28
ANCHORAGE SCHEMES H29	Page	29
RACKING PANELS H25 PLANE HEAD (Types: Closed Ribbed - Perforated 50% Eyelet 8x38)	Page	30
RACKING PANELS H25 PRESSED HEAD (Types: Closed Ribbed - Perforated 50% Eyelet 8x38)	Page	31
RACKING PANELS H30 PLANE HEAD (Types: Closed Ribbed - Perforated 50% Eyelet 8x38)	Page	32
RACKING PANELS H40 PLANE HEAD (Types: Closed Ribbed - Perforated 50% Eyelet 8x38)	Page	33
RACKING PANELS H40 PRESSED HEAD (Types: Closed Ribbed - Perforated 50% Eyelet 8x38)	Page	34
ACCESSORIES	Page	35



Quoted photos, data and technical information are not binding. Abagrigliati srl reserves the right to modify them, (photos, data & technical information), without notice, in case of technical and/or manufacturing necessities. Abagrigliati srl refuses any responsibility for deformations or failures due to an improper or abnormal use. We refuse any responsibility for possible inaccuracies due to printing or transcribing mistakes.





# FLOORING Profiles

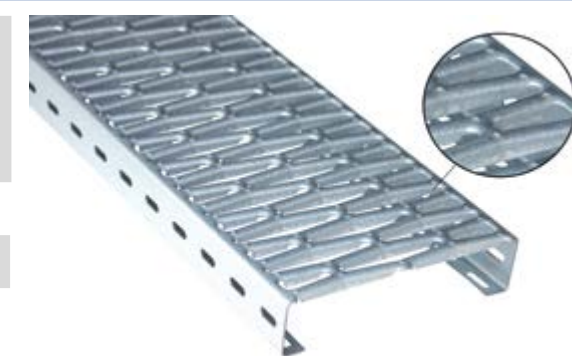
## Type Profile RSA

Available sections: W x H x THK (mm)	250x58x1.2	250x58x1.5
Length (mm):	600 to 12000	
Intermediate measures:	Cutting Pitch 40 mm	
Material:	Sendzimir Zinc Plated Steel	
Features:	<ul style="list-style-type: none"> <li>• High structural rigidity;</li> <li>• Suitable for mezzanines and walkways;</li> <li>• 40% perforation surface;</li> <li>• SLIP RESISTANCE RATING NOT CLASSIFIED.</li> </ul>	



## Type Profile GP

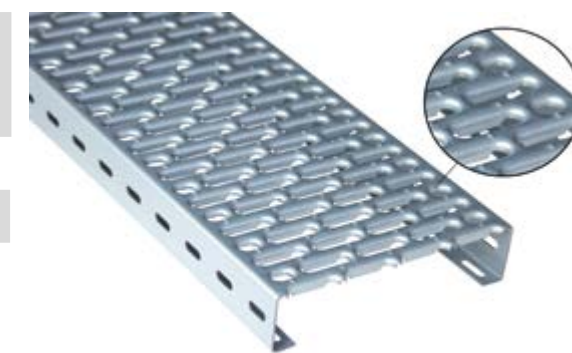
Available sections: W x H x THK (mm)	125x58x1.2 /	125x58x1.5 150x58x1.5	125x58x2.0 150x58x2.0
	200x58x1.2	200x58x1.5	200x58x2.0
	250x58x1.2	250x58x1.5	250x58x2.0
Length (mm):	600 to 12000		
Intermediate measures:	Cutting Pitch 50 mm		
Material:	<ul style="list-style-type: none"> <li>• Raw Steel Thk. 2.0</li> <li>• Sendzimir Zinc Plated Steel</li> <li>• Hot-Dip Galvanized Steel Thk. 2.0 mm</li> </ul>		
Features:	<ul style="list-style-type: none"> <li>• 50% perforation surface (sec. 250);</li> <li>• High structural rigidity;</li> <li>• Suitable for mezzanines, walkways, and racking panels;</li> <li>• SLIP RESISTANCE RATING R9 DIN 51130.</li> </ul>		



SLIP RESISTANCE RATING  
R9 DIN 51130 6° < a < 10° 

## Type Profile ZFR

Available sections: W x H x THK (mm)	125x58x1.2	125x58x1.5	125x58x2.0
	200x58x1.2	200x58x1.5	200x58x2.0
	250x58x1.2	250x58x1.5	250x58x2.0
Length (mm):	600 to 12000		
Intermediate measures:	Cutting Pitch 50 mm		
Material:	<ul style="list-style-type: none"> <li>• Raw Steel Thk. 2.0 and more</li> <li>• Sendzimir Zinc Plated Steel</li> <li>• Hot-Dip Galvanized Steel Thk. 2.0 mm and more</li> <li>• Cor-Ten A Steel Thk. 2.0 mm (sec. 200 - 250)</li> </ul>		
Features:	<ul style="list-style-type: none"> <li>• 35% perforation surface (sec. 250);</li> <li>• High structural rigidity;</li> <li>• Suitable for mezzanines and walkways;</li> <li>• SLIP RESISTANCE RATING R9 DIN 51130.</li> </ul>		



SLIP RESISTANCE RATING  
R9 DIN 51130 6° < a < 10° 



Type **Profile RSC**

Available sections: W x H x THK (mm)	200x58x1.2	200x58x1.5	200x58x2.0
	250x58x1.2	250x58x1.5	250x58x2.0

Length (mm): 600 to 12000

Intermediate measures: Cutting Pitch 50 mm

**Material:**

- Raw Steel Thk. 2.0 and more
- Sendzimir Zinc Plated Steel
- Hot-Dip Galvanized Steel Thk. 2.0 mm and more

**Features:**

- High structural rigidity;
- Suitable for mezzanines and walkways;
- Profile used for carrying hand pallet trucks;
- SLIP RESISTANCE RATING R9 DIN 51130.



SLIP RESISTANCE RATING  
R9 DIN 51130 6° < a < 10° 

Type **Profile RSC 3.0**

Available sections: W x H x THK (mm)	200x58x2.5	200x58x3.0
	250x58x2.5	250x58x3.0

Length (mm): 600 to 6000

Intermediate measures: Cutting Pitch 50 mm

**Material:** Sendzimir Zinc Plated Steel

**Features:**

- Profile in thickness 2.5 and 3.0 mm guarantees high performance and loading capacity;
- Suitable for mezzanines and walkways;
- Profile used for carrying hand pallet trucks;
- SLIP RESISTANCE RATING R9 DIN 51130.



SLIP RESISTANCE RATING  
R9 DIN 51130 6° < a < 10° 

Type **Profile RSC/F**

Available sections: W x H x THK (mm)	200x58x1.2	200x58x1.5	200x58x2.0
	250x58x1.2	250x58x1.5	250x58x2.0

Length (mm): 600 to 12000

Intermediate measures: Cutting Pitch 50 mm

**Material:**

- Raw Steel Thk. 2.0 and more
- Sendzimir Zinc Plated Steel
- Hot-Dip Galvanized Steel Thk. 2.0 mm and more

**Features:**

- High structural rigidity;
- Suitable for mezzanines and walkways;
- Profile used for carrying hand pallet trucks;
- 5 mm holes for condensate drainage;
- SLIP RESISTANCE RATING R9 DIN 51130.



SLIP RESISTANCE RATING  
R9 DIN 51130 6° < a < 10° 



Type **Profile ZB**

Available sections: W x H x THK (mm)	125x58x2.0	200x58x2.0	250x58x2.0

Length (mm): 600 to 12000

Intermediate measures: Cutting Pitch 50 mm

**Material:**

- Raw Steel
- Sendzimir Zinc Plated Steel
- Hot-Dip Galvanized Steel

**Features:**

- High structural rigidity;
- Suitable for mezzanines and walkways;
- SLIP RESISTANCE RATING R9 DIN 51130.



SLIP RESISTANCE RATING  
R9 DIN 51130 6° < a < 10° 

Type **Profile ZBC**

Available sections: W x H x THK (mm)	125x58x1.5	125x58x2.0
	150x58x1.5	150x58x2.0
	200x58x1.5	200x58x2.0
	250x58x1.5	250x58x2.0
	/	300x58x2.0

Length (mm): 600 to 12000

Intermediate measures: Cutting Pitch 50 mm

**Material:**

- Raw Steel Thk. 2.0 and more
- Sendzimir Zinc Plated Steel
- Hot-Dip Galvanized Steel Thk. 2.0 mm and more

**Features:**

- High structural rigidity;
- Suitable for mezzanines and walkways;
- SLIP RESISTANCE RATING R9 DIN 51130.



SLIP RESISTANCE RATING  
R9 DIN 51130 6° < a < 10° 







Type **Profile ZL**

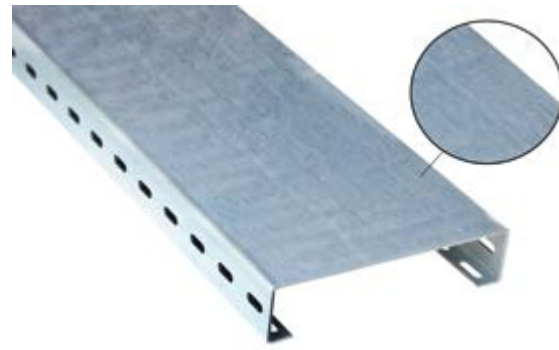
Available sections: W x H x THK (mm)	125x58x2.0	/	125x58x3.0
	150x58x2.0	/	150x58x3.0
	200x58x2.0	200x58x2.5	200x58x3.0
	250x58x2.0	250x58x2.5	250x58x3.0
	/	300x58x2.5	300x58x3.0

Length (mm): 600 to 12000  
Thk. 3.0 mm max 6000mm

Intermediate measures: Cutting Pitch 50 mm

Material: Sendzimir Zinc Plated Steel

- Features:**
- High structural rigidity;
  - Suitable for mezzanines **ONLY** if covered with antislip material;
  - Suitable for floor coverings like carpets, lino floors, Thk. 2.0 mm and more;
  - Suitable for coverings like chipboard, plywood and plastic coverings.



Type **Profile ZA**

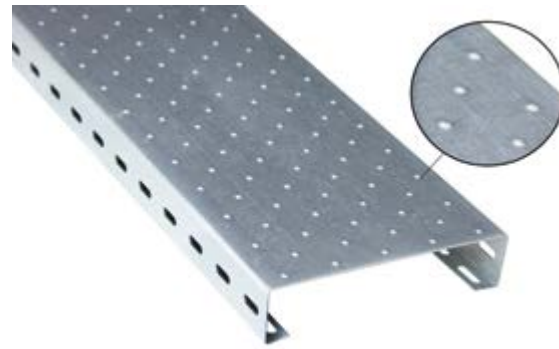
Available sections: W x H x THK (mm)	125x58x2.0	/	125x58x3.0
	150x58x2.0	/	150x58x3.0
	200x58x2.0	200x58x2.5	200x58x3.0
	250x58x2.0	250x58x2.5	250x58x3.0
	/	300x58x2.5	300x58x3.0

Length (mm): 600 to 12000  
Sp. 3.0 mm max 6000mm

Intermediate measures: Cutting Pitch 50 mm

Material: Sendzimir Zinc Plated Steel

- Features:**
- High structural rigidity;
  - Suitable for mezzanines, the "punctioned" surface assures the anti-slip effect for pedestrian use;
  - Suitable for floor coverings like carpets, lino floors, chipboard, plywood and plastic coverings;
  - SLIP RESISTANCE RATING **R9 DIN 51130**.



SLIP RESISTANCE RATING  
**R9 DIN 51130** 6° < a < 10°



Type **Profile LB**

Available sections: W x H x THK (mm)	/	/	150x58x3.0*
	200x58x2.0	200x58x2.5	200x58x3.0
	250x58x2.0	250x58x2.5	250x58x3.0
	/	300x58x2.5	300x58x3.0
	/	/	300x58x3.0

Length (mm): 600 to 6000

Intermediate measures: Cutting Pitch 60 mm

- Material:**
- Raw Steel
  - Sendzimir Zinc Plated Steel
  - Hot-Dip Galvanized Steel Thk. 2.0 mm and more
  - Cor-Ten A Steel Thk. 2.0 mm (Thk. 3.0 sec. 150)
  - Stainless Steel AISI 304 or 316\*\* Thk. 1.5 or 2.0
  - Aluminium Alloy Peraluman 5754 H111 Thk. 2.5

- Features:**
- Embossed surface for profile stiffening;
  - Ø 8mm perforation in upward direction guarantees the anti-slip effect. Towards perforation guarantees the atmospheric agents drainage;
  - Suitable for cycle paths and pedestrian walkways, wheelchair ramps, mezzanines and technical applications/gangways;
  - SLIP RESISTANCE RATING **R12 DIN 51130**;
  - SLIP RESISTANCE RATING Cor-ten A **R13 DIN 51130**.
- \* Available with or without winglet eyelets.  
Without winglet eyelets - better performance

\*\*Stainless steel AISI 304 and 316 only upon request

SLIP RESISTANCE RATING  
**R12 DIN 51130** 27° < a < 35°  
VERSION COR-TEN A  
**R13 DIN 51130** a > 35°

Type **Profile GE**

Available sections: W x H x THK (mm)	/	125x58x2.0
	200x58x1.5	200x58x2.0
	250x58x1.5	250x58x2.0
	300x58x1.5	300x58x2.0
	/	350x58x2.0
	/	400x58x2.0
	/	500x58x2.0

Length (mm): 600 to 12000

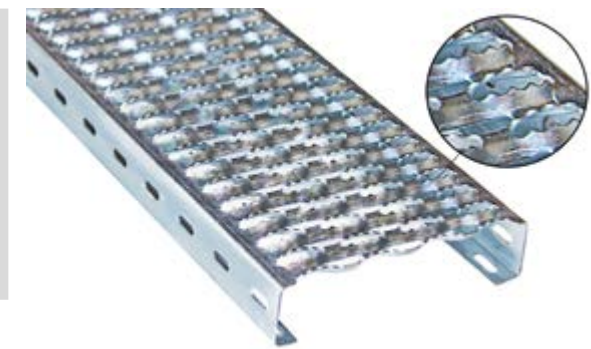
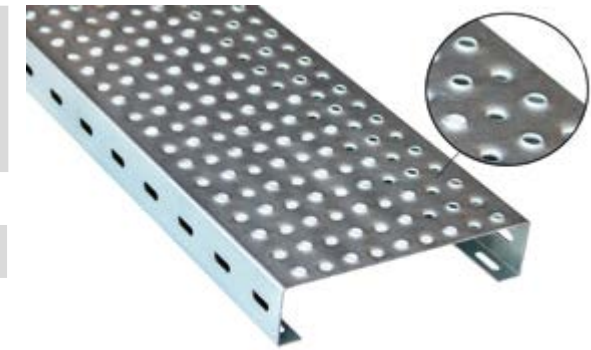
Intermediate measures: Cutting Pitch 60 mm

- Material:**
- Raw Steel Thk. 2.0 and more
  - Sendzimir Zinc Plated Steel
  - Hot-Dip Galvanized Steel Thk. 2.0 mm and more
  - Cor-Ten A Steel Thk. 2.0 mm (sec.200 - 250 - 300)
  - Stainless Steel AISI 304 or 316\*\* Thk. 1.5 or 2.0 (sec.200 - 250 - 300)
  - Aluminium Alloy Peraluman 5754 H111 Sp. 2.5 (from sec. 200)

- Features:**
- High structural rigidity;
  - Suitable for technical application/gangways;
  - 40% perforation surface;
  - SLIP RESISTANCE RATING **R12 DIN 51130**.

\*\*Stainless steel AISI 304 and 316 only upon request

SLIP RESISTANCE RATING  
**R12 DIN 51130** 27° < a < 35°





Type **Profile XB**

Available sections: W x H x THK (mm)	200x58x1.5	200x58x2.0	200x58x2.5
	250x58x1.5	250x58x2.0	250x58x2.5
	/	300x58x2.0	300x58x2.5

Length (mm):	600 to 12000
Intermediate measures:	Cutting Pitch 60 mm

- Material:**
- Raw Steel Thk. 2.0 and more
  - Sendzimir Zinc Plated Steel
  - Hot-Dip Galvanized Steel Thk. 2.0 mm and more
  - Cor-Ten A Steel Thk. 2.0 mm
  - Stainless Steel AISI 304 or 316\*\* Thk. 1.5 or 2.0
  - Aluminium Alloy Peraluman 5754 H111 Thk. 2.5

- Features:**
- Embossed surface for best rigidity;
  - The "punctioned" surface assures the anti-slip effect;
  - Suitable for cycle paths and pedestrian walkways, mezzanines and technical applications/gangways;
  - SLIP RESISTANCE RATING **R11 DIN 51130**.

\*\*Stainless steel AISI 304 and 316 only upon request



Type **Profile XF**

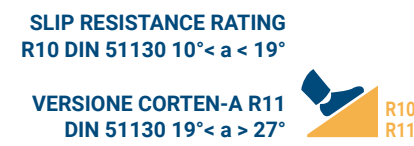
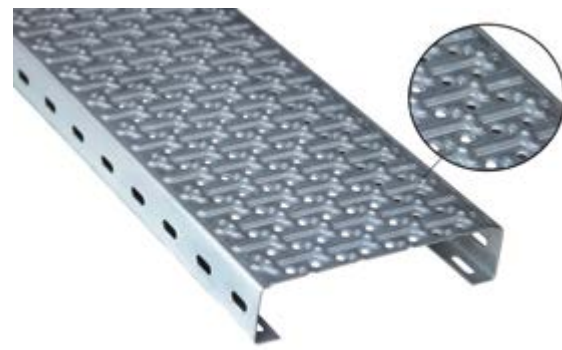
Available sections: W x H x THK (mm)	200x58x1.5	200x58x2.0	200x58x2.5
	250x58x1.5	250x58x2.0	250x58x2.5
	/	300x58x2.0	300x58x2.5

Length (mm):	600 to 12000
Intermediate measures:	Cutting Pitch 60 mm

- Material:**
- Raw Steel Thk. 2.0 and more
  - Sendzimir Zinc Plated Steel
  - Hot-Dip Galvanized Steel Thk. 2.0 mm and more
  - Cor-Ten A Steel Thk. 2.0 mm
  - Stainless Steel AISI 304 or 316\*\* Sp. 1.5 o 2.0
  - Aluminium Alloy Peraluman5754 H111 Sp. 2.5

- Features:**
- Embossed surface for profile stiffening;
  - The "punctioned" surface assures the anti-slip effect, Ø 8mm perforation guarantees atmospheric agents drainage;
  - Suitable for cycle paths and pedestrian walkways, mezzanines and technical applications/gangways;
  - SLIP RESISTANCE RATING **R10 DIN 51130**;
  - SLIP RESISTANCE RATING **R11 DIN 51130**.

\*\*Stainless steel AISI 304 and 316 only upon request



**ACCESSORIES H58**

**Compensation ZL**

Sections (mm):	50 - 80 - 100
Length (mm):	4.000



**Head cover 40x60x40**

Length (mm):	3.000
--------------	-------



**"L" shaped Toe board 30x200x30**

Length (mm):	3.000
--------------	-------



**Linear Toe board 210x322**

Length (mm):	3.000
--------------	-------



**Angle bracket 30x30x2**

Length (mm):	6.000
--------------	-------



**Perforated angle bracket 60x40**

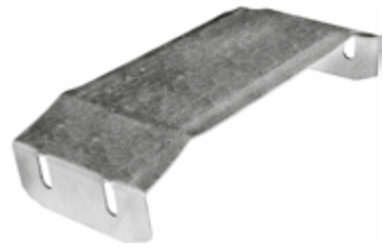
<b>RAW:</b>	
Thickness (mm):	30/10
Length (mm):	6.000
<b>SENDZIMIR ZINC PLATED:</b>	
Thickness (mm):	25/10
Length (mm):	6.000





**ACCESSORIES H58**

Reinforced joint



Simple joint 50x300 (P50)

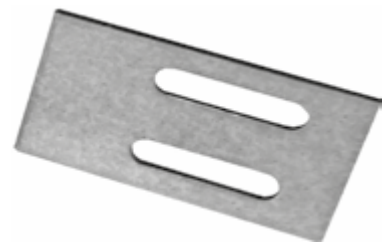


Reinforcement plate (P50)

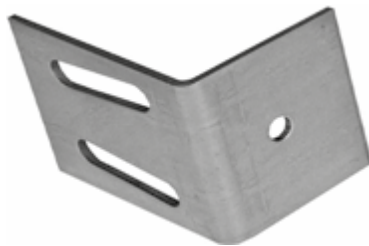
Length (mm): 3.000



Open beam plane bracket



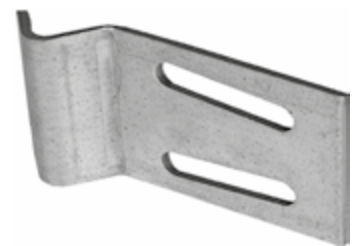
Side anchoring bracket



Open beam anchoring bracket



SIGMA - ZL anchoring bracket



Tubular beam anchoring bracket



Pressure anchorage



Joint 50x360 (P60)



Notched bar (P60)



Stainless steel ogive Profile GE



PVC die-cast ogive Profile GE

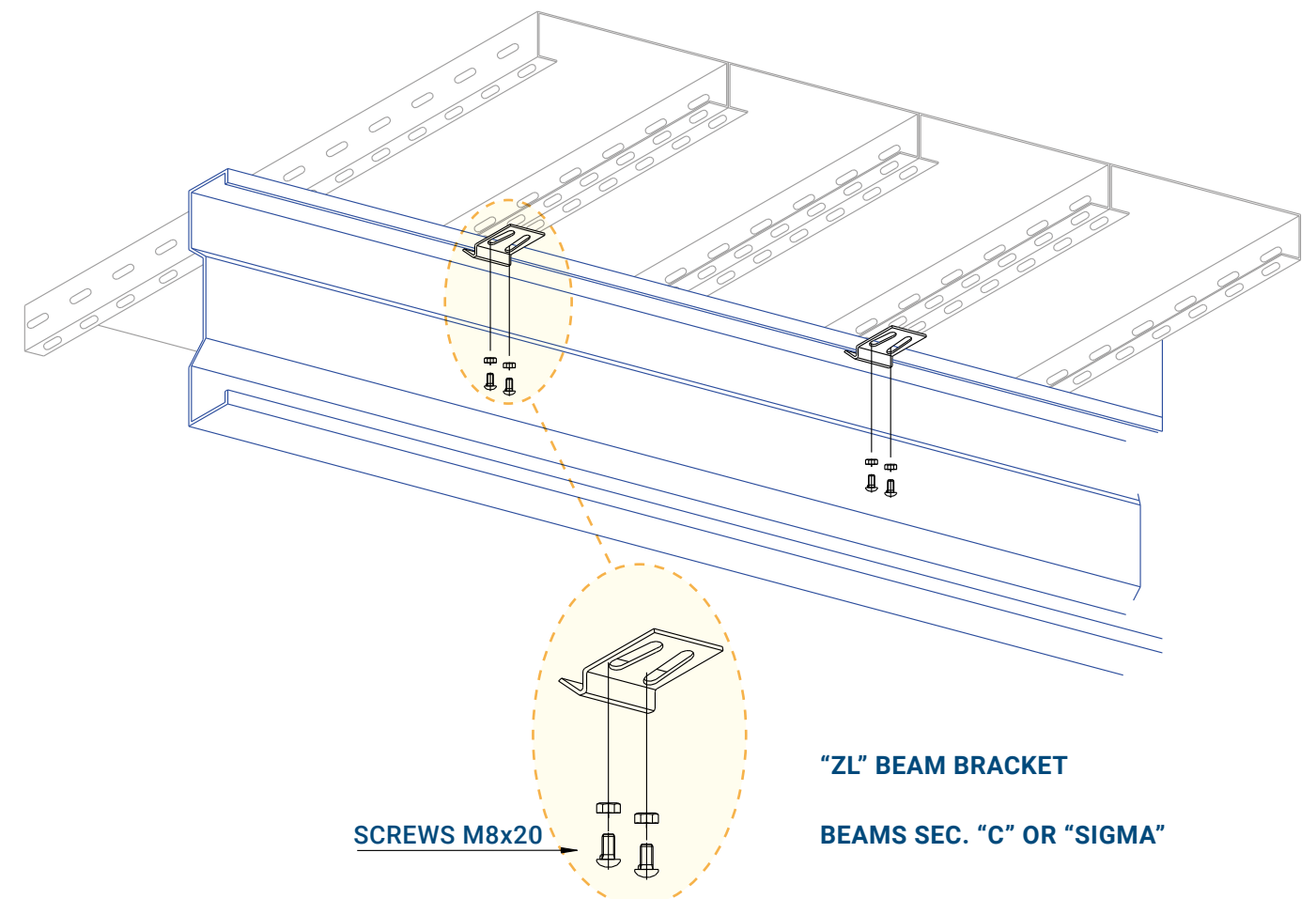
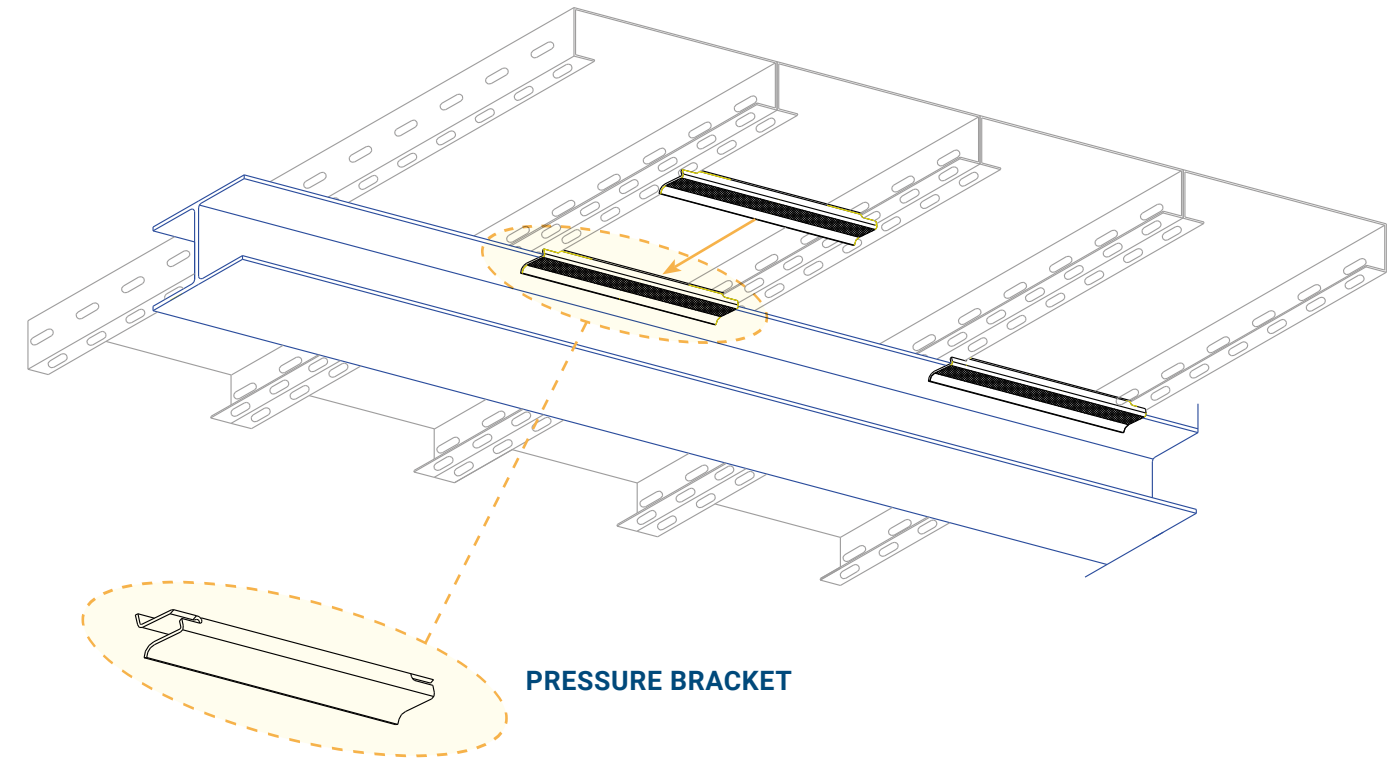


Bolt

Screw M8x20 + Flanged nut



**ANCHORING SYSTEMS**







# STEPS and RUNGS Profiles

## EMBOSEDDED CLOSED STEPS H58 P50



### Type Step GF

Available sections: W x H x THK (mm)	150x58x2.0	/	150x58x3.0
	200x58x2.0	/	/
	250x58x2.0	250x58x2.5	/
	300x58x2.0	300x58x2.5	/
	325x58x2.0	325x58x2.5	/

Length (mm): 600 to 9000

Intermediate measures: Cutting Pitch 50 mm

**Material:**

- Raw Steel
- Sendzimir Zinc Plated Steel
- Hot-Dip Galvanized Steel
- Cor-Ten A Steel Thk. 2.0 mm (sec. 250-300) or 3.0 mm (sec. 150)
- Stainless Steel AISI 304 or 316\*\* Thk. 1.5 or 2.0 (sec. 200-250-300)
- Aluminium Alloy Peraluman 5754 H111 Thk. 2.5 (sec. 200-250-300)

**Features:**

- Anti-panic surface, excellent anti-slip grip;
- Fast atmospheric agents draining;
- Suitable for gangways and fire escapes;
- SLIP RESISTANCE RATING R11 DIN 51130.

\*\*Stainless steel AISI 304 and 316 only upon request



SLIP RESISTANCE RATING R11 DIN 51130 19° < a < 27°

### Type Step ZB2

Available sections: W x H x THK (mm)	250x58x2.0	250x58x2.5
	300x58x2.0	300x58x2.5
	/	325x58x2.5

Length (mm): 600 to 9000

Intermediate measures: Cutting Pitch 50 mm

**Material:**

- Raw Steel
- Sendzimir Zinc Plated Steel
- Hot-Dip Galvanized Steel

**Features:**

- Anti-panic surface with Ø8 mm holes;
- Fast atmospheric agents draining;
- Anti-slip on both sides;
- SLIP RESISTANCE RATING R9 DIN 51130.

SLIP RESISTANCE RATING R9 DIN 51130 6° < a < 10°







Steps and rungs profiles  
**EMBOSSED CLOSED STEPS H58 P50 P60**

Type **Step ZBC**

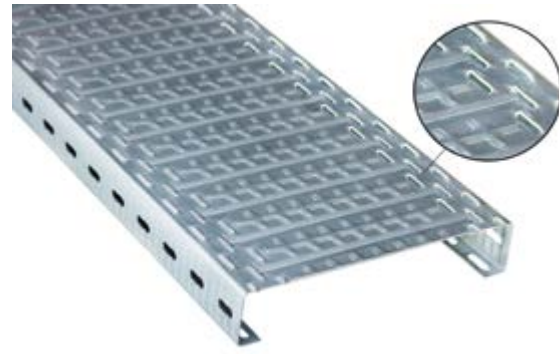
Available sections: W x H x THK (mm)	150x58x2.0	200x58x2.0
	250x58x2.0	300x58x2.0
Length (mm):	600 to 6000	
Intermediate measures:	Cutting Pitch 50 mm	
Material:	<ul style="list-style-type: none"> <li>• Raw Steel</li> <li>• Sendzimir Zinc Plated Steel</li> <li>• Hot-Dip Galvanized Steel</li> </ul>	
Features:	<ul style="list-style-type: none"> <li>• Embossed closed surface;</li> <li>• Anti-slip effect on one side;</li> <li>• Suitable for internal steps;</li> <li>• SLIP RESISTANCE RATING <b>R9 DIN 51130</b>.</li> </ul>	



SLIP RESISTANCE RATING  
R9 DIN 51130  $6^\circ < \alpha < 10^\circ$  

Type **Step GB2**

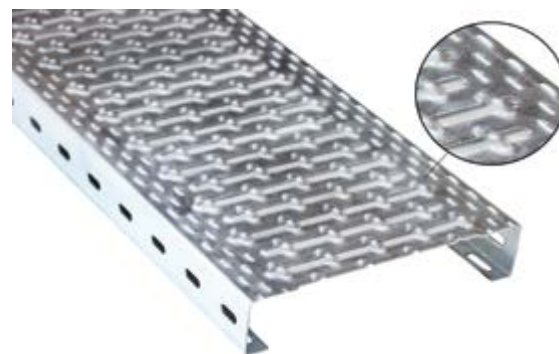
Available sections: W x H x THK (mm)	300x58x2.0	
Length (mm):	600 to 9000	
Intermediate measures:	Cutting Pitch 50 mm	
Material:	<ul style="list-style-type: none"> <li>• Raw Steel</li> <li>• Sendzimir Zinc Plated Steel</li> <li>• Hot-Dip Galvanized Steel</li> </ul>	
Features:	<ul style="list-style-type: none"> <li>• Embossed closed surface;</li> <li>• Anti-slip effect on <b>one side</b>;</li> <li>• Suitable for internal steps;</li> <li>• SLIP RESISTANCE RATING <b>R9 DIN 51130</b>.</li> </ul>	



SLIP RESISTANCE RATING  
R9 DIN 51130  $6^\circ < \alpha < 10^\circ$  

Type **Step GXB**

Available sections: W x H x THK (mm)	250x58x2.0	250x58x2.5
	300x58x2.0	300x58x2.5
Length (mm):	600 to 9000	
Intermediate measures:	Cutting Pitch 60 mm	
Material:	<ul style="list-style-type: none"> <li>• Raw Steel</li> <li>• Sendzimir Zinc Plated Steel</li> <li>• Hot-Dip Galvanized Steel</li> <li>• Cor-Ten A Steel Thk. 2.0 mm</li> <li>• Stainless Steel AISI 304 or 316** Thk. 2.0 (sec. 250-300)</li> <li>• Aluminium Alloy Peraluman 5754 H111 Thk. 2.5</li> </ul>	
Features:	<ul style="list-style-type: none"> <li>• Embossed surface for best profile stiffening;</li> <li>• The "punctioned" surface assures the anti-slip effect;</li> <li>• Suitable for internal technical applications;</li> <li>• SLIP RESISTANCE RATING <b>R11 DIN 51130</b>.</li> </ul>	



SLIP RESISTANCE RATING  
R11 DIN 51130  $19^\circ < \alpha < 27^\circ$  

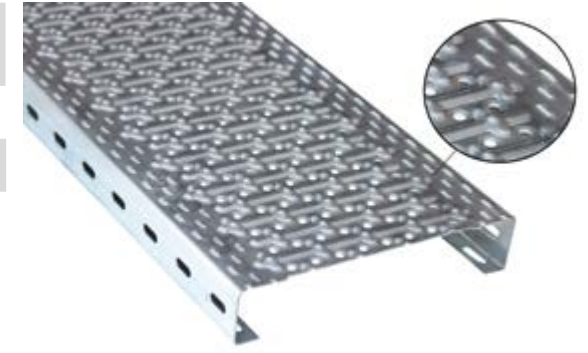
\*\*Stainless steel AISI 304 and 316 only upon request

**EMBOSSED PERFORATED STEPS H58 P60**



Type **Step GXF**

Available sections: W x H x THK (mm)	250x58x2.0	250x58x2.5
	300x58x2.0	300x58x2.5
Length (mm):	600 to 9000	
Intermediate measures:	Cutting Pitch 60 mm	
Material:	<ul style="list-style-type: none"> <li>• Raw Steel Thk. 2.0 mm and more</li> <li>• Sendzimir Zinc Plated Steel</li> <li>• Hot-Dip Galvanized Steel</li> <li>• Cor-Ten A Steel Thk. 2.0 mm</li> <li>• Stainless Steel AISI 304 Thk. 2.0 mm</li> <li>• Aluminium Alloy Peraluman 5754 H111 Thk. 2.5</li> </ul>	
Features:	<ul style="list-style-type: none"> <li>• Embossed surface for best profile stiffening;</li> <li>• The "punctioned" surface assures the anti-slip effect, Ø8mm perforation guarantees atmospheric agents drainage;</li> <li>• Suitable for fire escapes and external technical/service stairs;</li> <li>• SLIP RESISTANCE RATING <b>R11 DIN 51130</b>.</li> </ul>	



SLIP RESISTANCE RATING  
R11 DIN 51130  $19^\circ < \alpha < 27^\circ$  

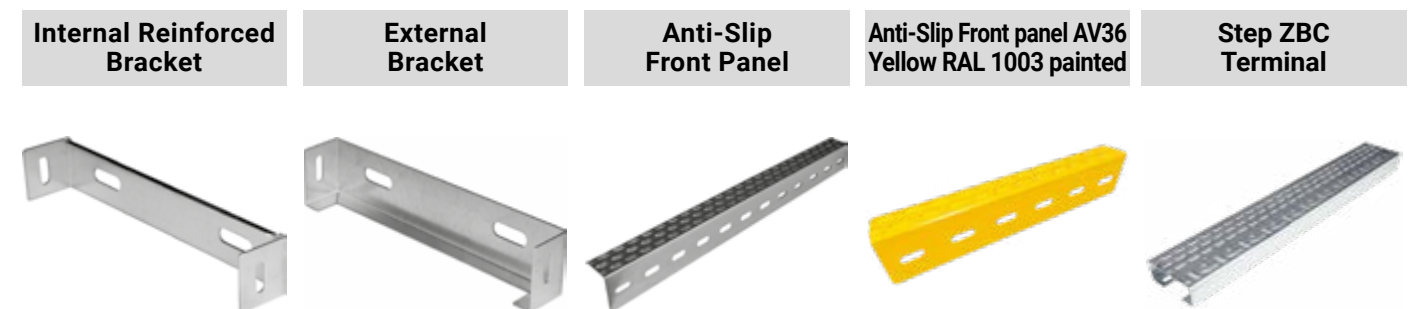
Type **Step GLB**

Available sections: W x H x THK (mm)	/	325x58x2.5
Length (mm):	600 to 6000	
Intermediate measures:	Cutting Pitch 60 mm	
Material:	<ul style="list-style-type: none"> <li>• Raw Steel</li> <li>• Sendzimir Zinc Plated Steel</li> <li>• Hot-Dip Galvanized Steel</li> </ul>	
Features:	<ul style="list-style-type: none"> <li>• Embossed surface for best profile stiffening;</li> <li>• The perforation, in upward direction, guarantees the anti-slip effect. Towards perforation guarantees the atmospheric agents drainage;</li> <li>• Suitable for cycle paths and pedestrian walkways, wheelchair ramps, mezzanines and technical applications/gangways;</li> <li>• Slip Resistance Rating <b>R12 DIN 51130</b>.</li> </ul>	



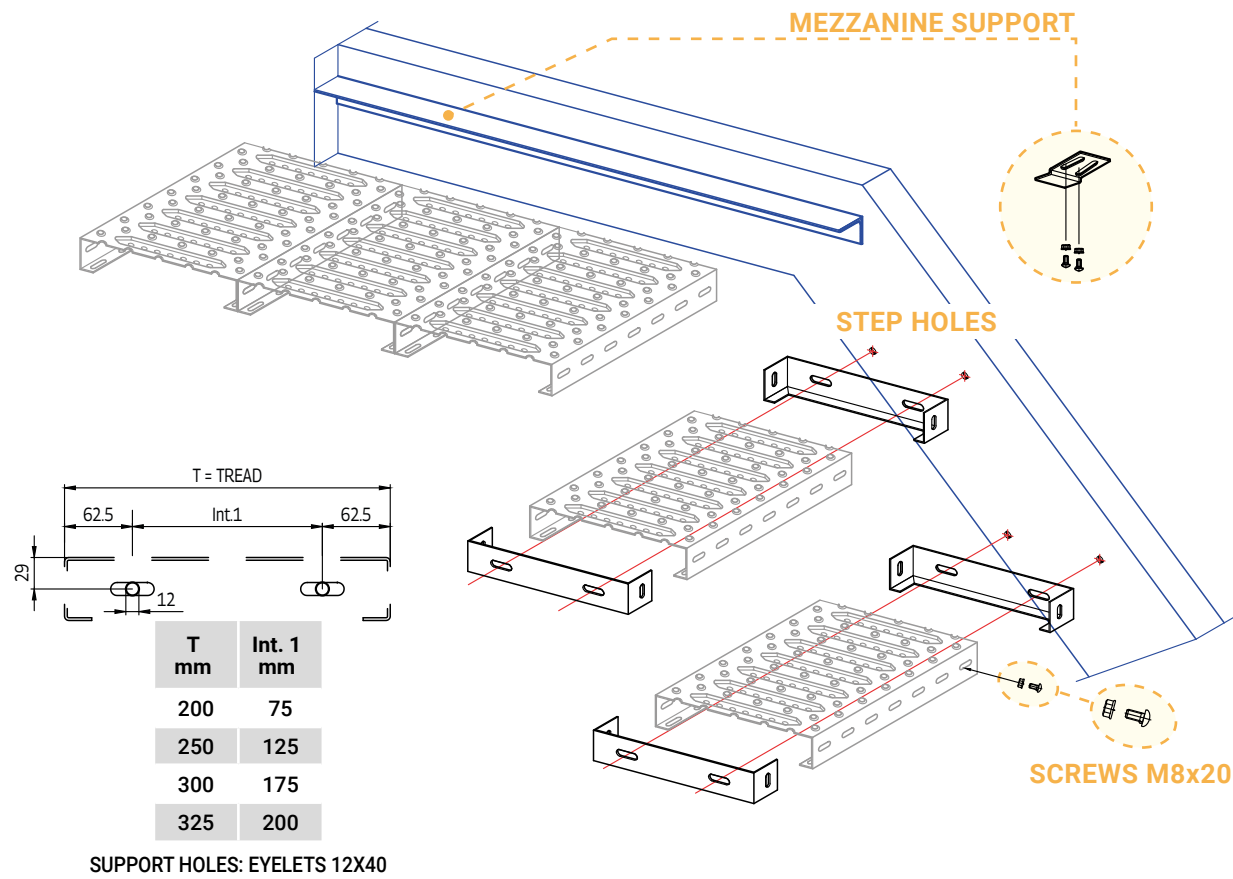
SLIP RESISTANCE RATING  
R12 DIN 51130  $27^\circ < \alpha < 35^\circ$  

**STEP ACCESSORIES H58**

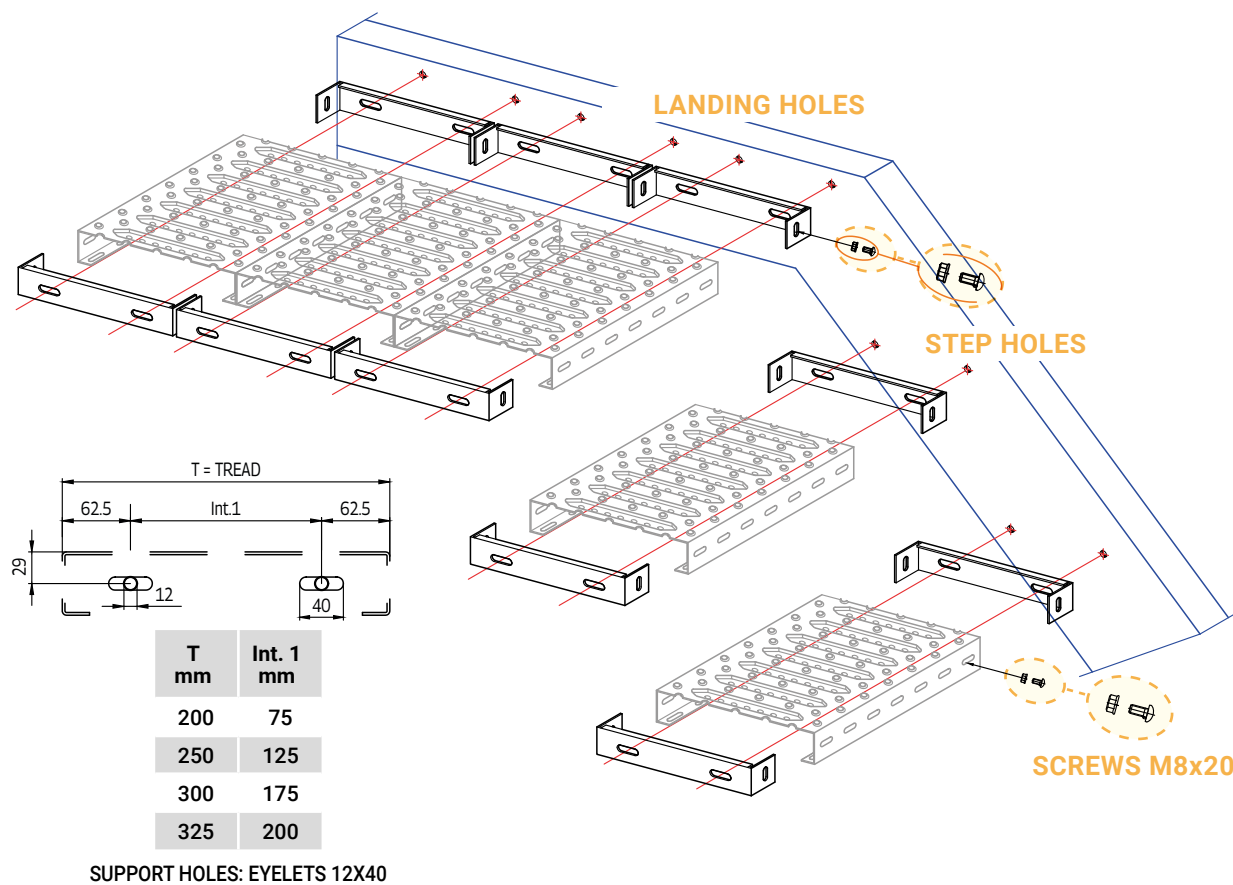




**SCHEME A1**

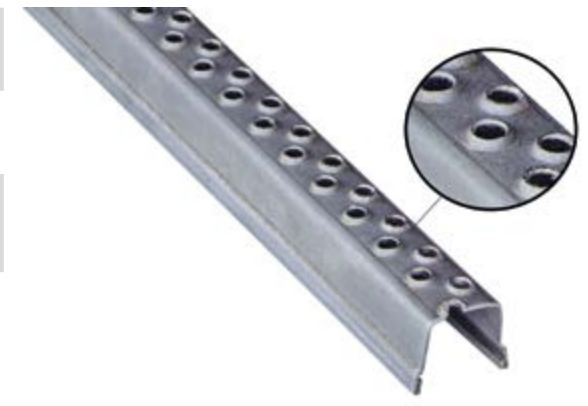


**ALTERNATIVES FOR STAIR LANDINGS**  
**ANGLE BRACKET SUPPORT, AS PER SCHEME A1**



**Type Rung 25x25**

Available sections: W x H x THK (mm)	25x25x1.5
Length (mm):	2000
Material:	Raw Steel S235JR (10 pcs rods packages)



- Features:**
- Ladders for pylos and silos maintenance access;
  - Ladders for heavy equipment/machinery;
  - Reinforced structure;
  - Slip Resistance Rating **R11 DIN 51130**.

SLIP RESISTANCE RATING  
R11 DIN 51130 19° <a> 27°

**Type Rung 25x30**

Available sections: W x H x THK (mm)	25x30x1.5	25x30x2.0
Length (mm):	2000	
Material:	• Raw Steel S235JR (10 pcs rods packages) • Stainless Steel AISI 304 OR 316 Thk. 1.5 mm • Aluminium Alloy Peraluman 5754 H111 Thk. 2.0 mm	

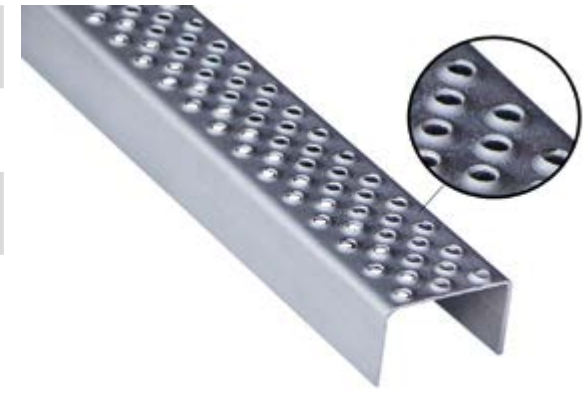


- Features:**
- Suitable for technical use;
  - Ladders for pylos and silos maintenance access;
  - Ladders for heavy equipment/machinery and tanker trucks;
  - Available in Raw Steel, Stainless Steel AISI 304-316 and Aluminium Alloy Peraluman 5754 H111;
  - Slip Resistance Rating **R11 DIN 51130**.

SLIP RESISTANCE RATING  
R11 DIN 51130 19° <a> 27°

**Type Rung 50x34**

Available sections: W x H x THK (mm)	50x34x2.0
Length (mm):	2000
Material:	Raw Steel S235JR



- Features:**
- Suitable for technical use;
  - Ladders for pylos and silos maintenance access;
  - Ladders for heavy equipment and tanker trucks;
  - Enlarged base tread;
  - Slip Resistance Rating **R11 DIN 51130**.

SLIP RESISTANCE RATING  
R11 DIN 51130 19° <a> 27°





Type **Step GF250TS**

<b>Available sections:</b> W x H x THK (mm)	250x58x2.0	
<b>Length (mm):</b>	800 to 1000	
<b>Intermediate measures:</b>	Contact our Technical Department	
<b>Material:</b>	<ul style="list-style-type: none"> <li>• Raw Steel</li> <li>• Hot-Dip Galvanized Steel</li> </ul>	
<b>Features:</b>	<ul style="list-style-type: none"> <li>• Anti-panic effect, excellent anti-slip grip on both directions;</li> <li>• Fast atmospheric agents draining;</li> <li>• Suitable for fire escapes and gangways;</li> <li>• <b>CE MARKING</b> 1090-1: EXC2;</li> <li>• Slip Resistance Rating <b>R11 DIN 51130</b>.</li> </ul>	



SLIP RESISTANCE RATING  
R11 DIN 51130 19° < a < 27° 

Type **Step GF300TS - Step GF325TS**

<b>Available sections:</b> W x H x THK (mm)	300x58x2.0	300x58x2.5
	325x58x2.0	325x58x2.5
<b>Length (mm):</b>	1000 - 1200 - 1500 - 1800	
<b>Intermediate measures:</b>	Contact our Technical Department	
<b>Material:</b>	<ul style="list-style-type: none"> <li>• Raw Steel</li> <li>• Hot-Dip Galvanized Steel</li> </ul>	
<b>Features:</b>	<ul style="list-style-type: none"> <li>• Anti-panic effect, excellent anti-slip grip on both directions;</li> <li>• Fast atmospheric agents draining;</li> <li>• Suitable for fire escapes and gangways;</li> <li>• <b>CE MARKING</b> 1090-1: EXC2;</li> <li>• Slip Resistance Rating <b>R11 DIN 51130</b>.</li> </ul>	



SLIP RESISTANCE RATING  
R11 DIN 51130 19° < a < 27° 

Type **Step GF300/2400TS - Step GF325/2400TS**

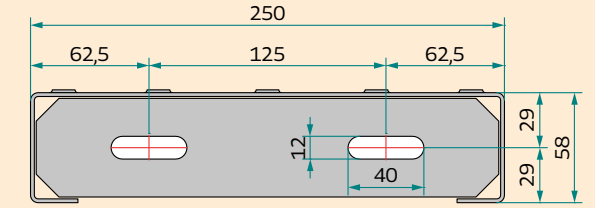
<b>Available sections:</b> W x H x THK (mm)	300x83x2.5	325x83x2.5
<b>Length (mm):</b>	2400	
<b>Intermediate measures:</b>	Contact our Technical Department	
<b>Material:</b>	<ul style="list-style-type: none"> <li>• Raw Steel</li> <li>• Hot-Dip Galvanized Steel</li> </ul>	
<b>Features:</b>	<ul style="list-style-type: none"> <li>• Anti-panic effect, excellent anti-slip grip on both directions;</li> <li>• Fast atmospheric agents draining;</li> <li>• Suitable for fire escapes;</li> <li>• <b>CE MARKING</b> 1090-1: EXC2;</li> <li>• Slip Resistance Rating <b>R11 DIN 51130</b>.</li> </ul>	



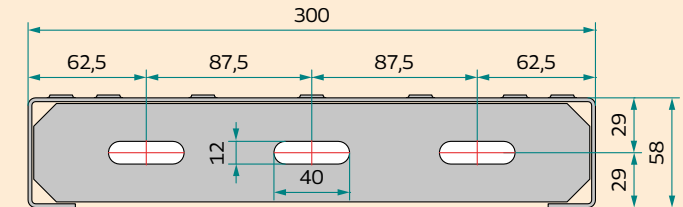
SLIP RESISTANCE RATING  
R11 DIN 51130 19° < a < 27° 



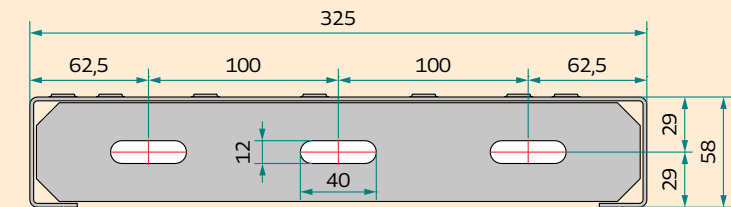
**Head GF250 H58**



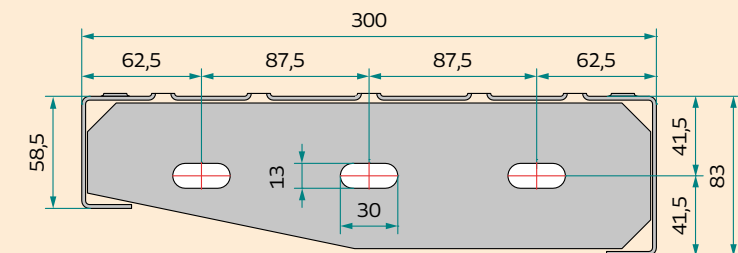
**Head GF300 H58**



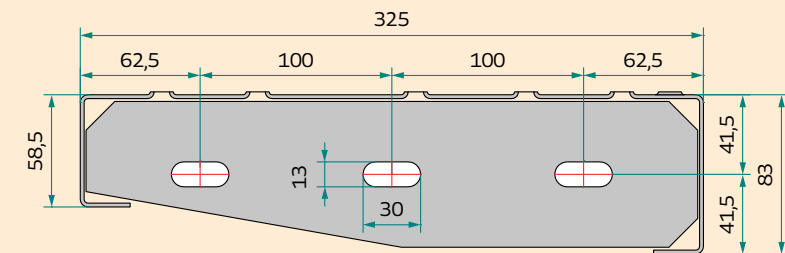
**Head GF325 H58**



**Head GF300 H83**



**Head GF325 H83**



Section mm	Height h mm	Thickness mm	AVAILABLE MEASURES					
			Standard Lengths (mm)					
			800	1000	1200	1500	1800	2400
Raw Steel S235JR (Weight kg/pc.)								
250	58	2	5,76	6,98	/	/	/	/
300	58	2	/	7,92	9,18	/	/	/
300	58	2.5	/	/	12,00	13,80	17,03	/
325	58	2.5	/	/	13,00	14,65	18,06	/
300	83	2.5	/	/	/	/	/	29,13
325	83	2.5	/	/	/	/	/	30,57

Hot-Dip Galvanized version (UNI EN ISO 1461 dd July 2009) due to the treatment, the profiles weight increases by 8% averagely



# RACKING

## Components

### Type Profile PL

<b>Available sections: W x H x THK (mm)</b>	200x29x1.5	200x29x2.0
<b>Length (mm):</b>	500 to 10000	
<b>Intermediate measures:</b>	Cutting Pitch 1 mm	
<b>Material:</b>	Sendzimir Zinc Plated Steel	
<b>Features:</b>	• Suitable as racking panels	



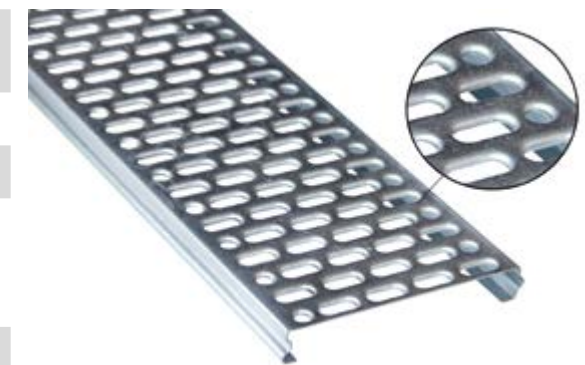
### Type Profile PB

<b>Available sections: W x H x THK (mm)</b>	200x29x1.5	200x29x2.0
<b>Length (mm):</b>	500 to 10000	
<b>Intermediate measures:</b>	Cutting Pitch 1 mm	
<b>Material:</b>	Sendzimir Zinc Plated Steel	
<b>Features:</b>	• High structural rigidity • Suitable as racking panels	



### Type Profile PFR

<b>Available sections: W x H x THK (mm)</b>	200x29x1.5	200x29x2.0
<b>Length (mm):</b>	500 to 6000	
<b>Intermediate measures:</b>	Cutting Pitch 1 mm	
<b>Material:</b>	• Raw Steel Thk. 2.0 mm • Sendzimir Zinc Plated Steel • Hot-Dip Galvanized Steel Tkh. 2.0 mm	
<b>Features:</b>	• High structural rigidity • Suitable as racking panel	

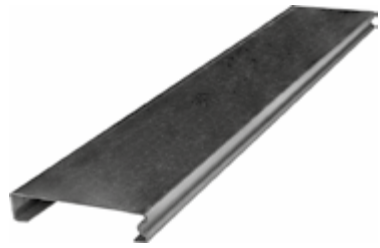




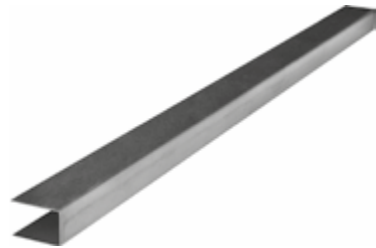


**ACCESSORIES H29**

Compensation PL



Head cover 30x30x30h



Reinforced joint



Clamp SU3825 with screw



Bracket S38 with screw



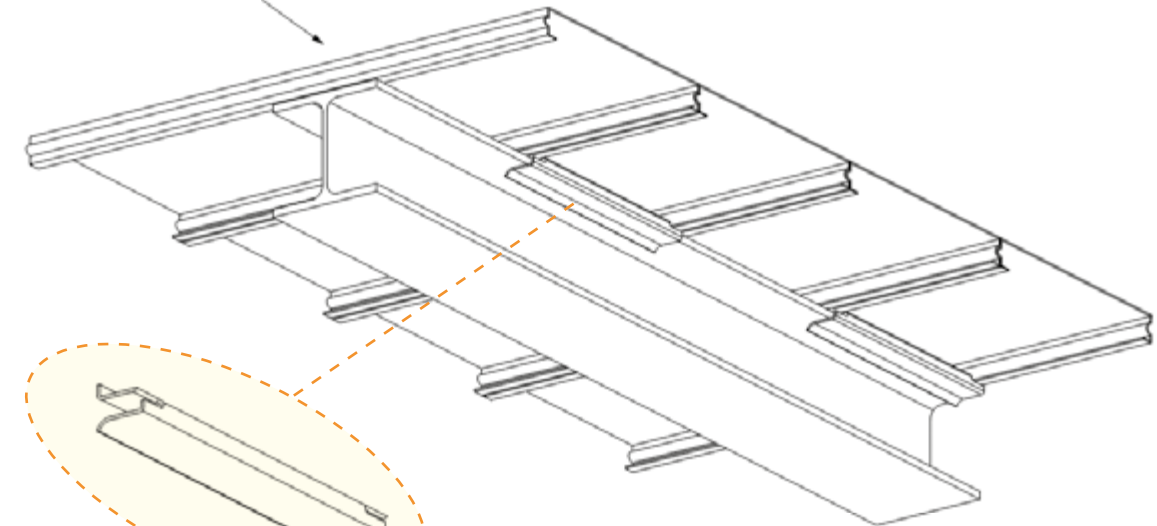
Tubular beam anchorage



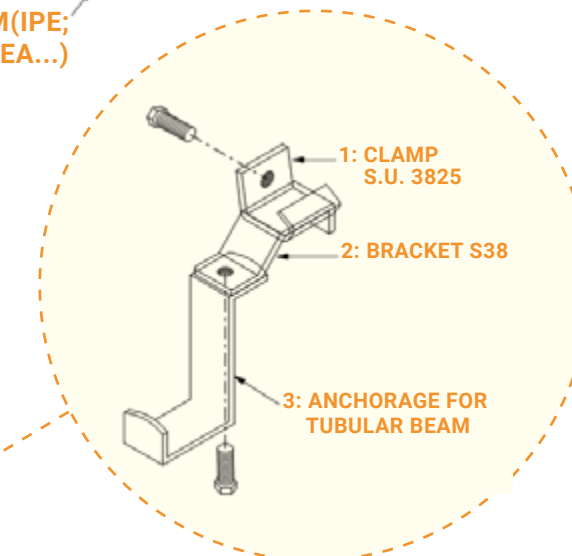
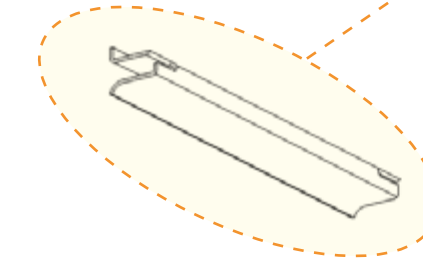
Pressure anchorage



PROFILE H29 (PL; PB; PFR)



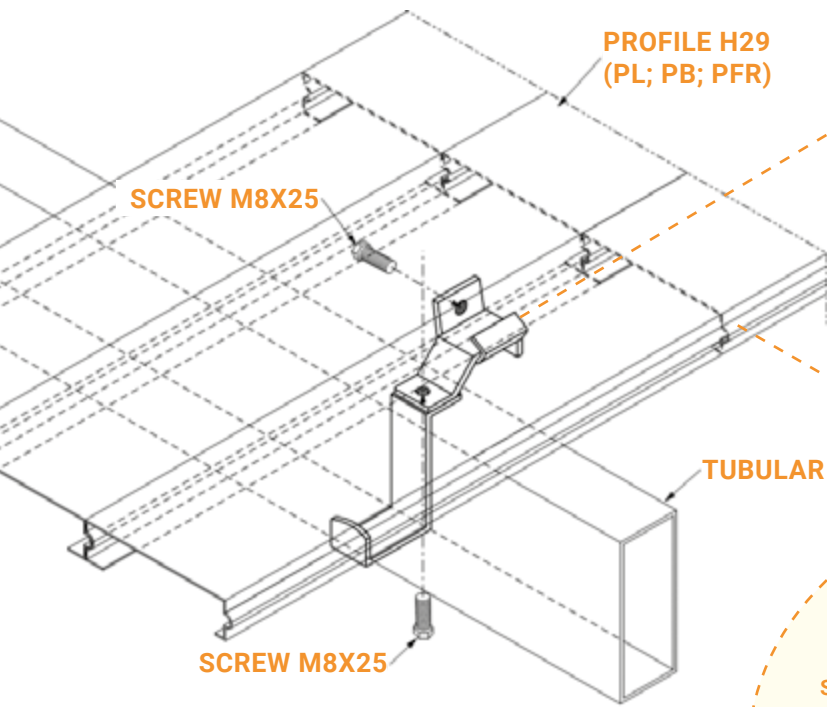
OPEN BEAM (IPE; UPN; HEA...)



1: CLAMP S.U. 3825

2: BRACKET S38

3: ANCHORAGE FOR TUBULAR BEAM

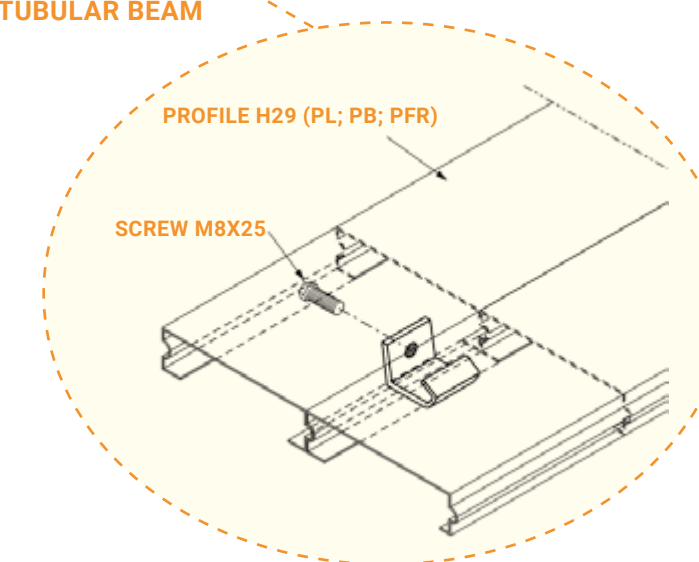


PROFILE H29 (PL; PB; PFR)

SCREW M8X25

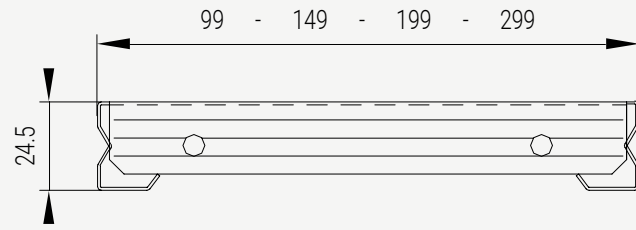
TUBULAR BEAM

SCREW M8X25



PROFILE H29 (PL; PB; PFR)

SCREW M8X25



**Type Closed Ribbed**

<b>Available sections: W x H x THK (mm)</b>	100x25x0.5	150x25x0.5	200x25x0.5	/
	100x25x0.6	150x25x0.6	200x25x0.6	300x25x0.6
	100x25x0.8	150x25x0.8	200x25x0.8	300x25x0.8
	100x25x1.0	150x25x1.0	200x25x1.0	300x25x1.0
	100x25x1.2	150x25x1.2	200x25x1.2	300x25x1.2
	100x25x1.5	150x25x1.5	200x25x1.5	300x25x1.5

**Length (mm):**

- 300 to 2000 (Section 300 and thickness 1.5 excluded)
- 500 to 2000 (Maximum length for section 300 and thickness 1.5)

**Intermediate measures:** Cutting Pitch 1 mm

**Material:** Sendzimir Zinc Plated Steel

**Features:**

- Ribbed surface
- Head holes



**Type Perforated 50% - Eyelet 8x38 mm**

<b>Available sections: W x H x THK (mm)</b>	100x25x0.8	150x25x0.8	200x25x0.8
	100x25x1.0	150x25x1.0	200x25x1.0
	100x25x1.2	150x25x1.2	200x25x1.2
	100x25x1.5	150x25x1.5	200x25x1.5

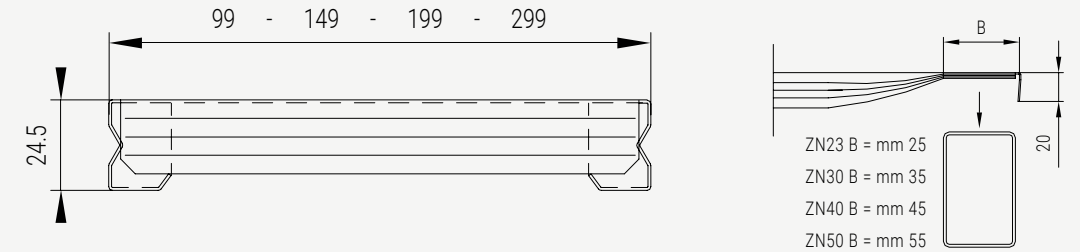
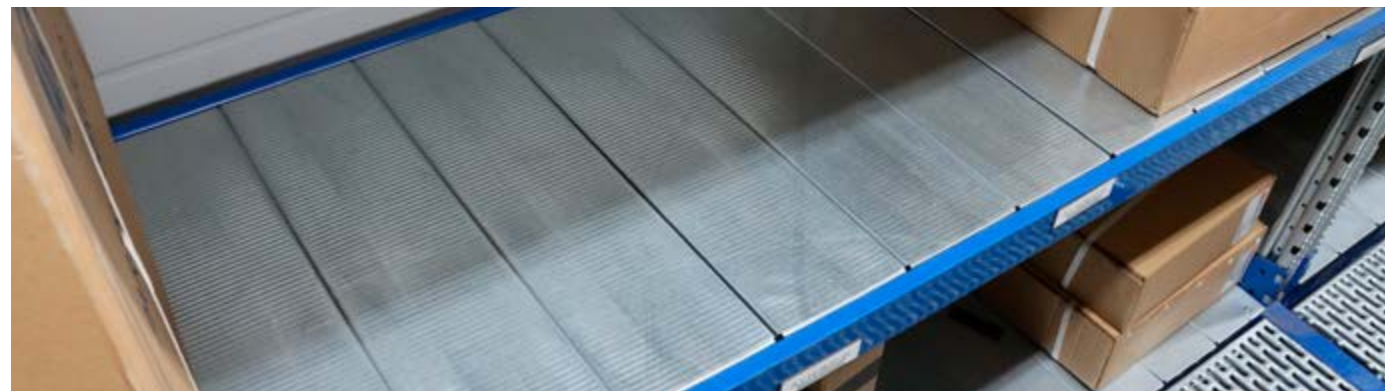
**Length (mm):** 500 to 2000

**Intermediate measures:** Cutting Pitch 1 mm

**Material:** Sendzimir Zinc Plated Steel

**Features:**

- Ribbed surface
- Head holes



**Type Closed Ribbed**

<b>Available sections: W x H x THK (mm)</b>	100x25x0.5	150x25x0.5	200x25x0.5	/
	100x25x0.6	150x25x0.6	200x25x0.6	300x25x0.6
	100x25x0.8	150x25x0.8	200x25x0.8	300x25x0.8
	100x25x1.0	150x25x1.0	200x25x1.0	300x25x1.0
	100x25x1.2	150x25x1.2	200x25x1.2	300x25x1.2
	100x25x1.5	150x25x1.5	200x25x1.5	300x25x1.5

**Length (mm):**

- 300 to 2000 (Section 300 and thickness 1.5 excluded)
- 500 to 2000 (Maximum length for section 300 and thickness 1.5)

**Intermediate measures:** Cutting Pitch 1 mm

**Material:** Sendzimir Zinc Plated Steel

**Features:**

- Ribbed surface
- Head holes



**Type Perforated 50% - Eyelet 8x38 mm**

<b>Available sections: W x H x THK (mm)</b>	100x25x0.8	150x25x0.8	200x25x0.8
	100x25x1.0	150x25x1.0	200x25x1.0
	100x25x1.2	150x25x1.2	200x25x1.2
	100x25x1.5	150x25x1.5	200x25x1.5

**Length (mm):** 500 to 2000

**Intermediate measures:** Cutting Pitch 1 mm

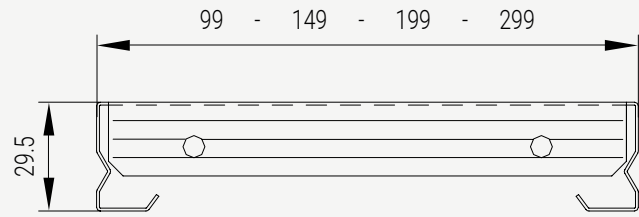
**Material:** Sendzimir Zinc Plated Steel

**Features:**

- Ribbed surface
- Possibility of having head holes



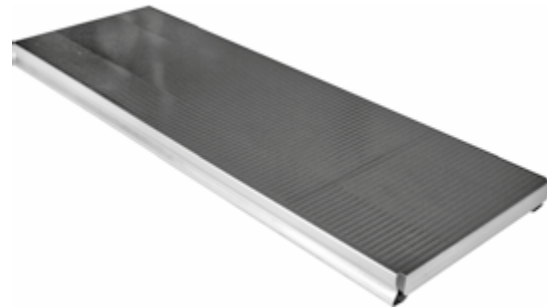




**Type Closed Ribbed**

<b>Available sections: W x H x THK (mm)</b>	100x30x0.6	150x30x0.6	200x30x0.6	300x30x0.6
	100x30x0.8	150x30x0.8	200x30x0.8	300x30x0.8
	100x30x1.0	150x30x1.0	200x30x1.0	300x30x1.0
	100x30x1.2	150x30x1.2	200x30x1.2	300x30x1.2
	100x30x1.5	150x30x1.5	200x30x1.5	300x30x1.5

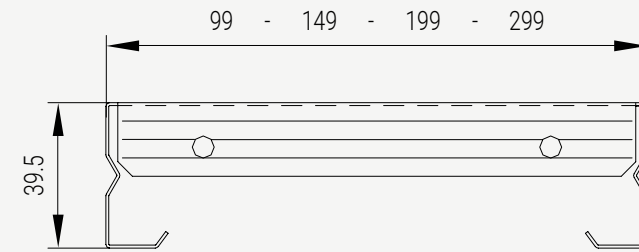
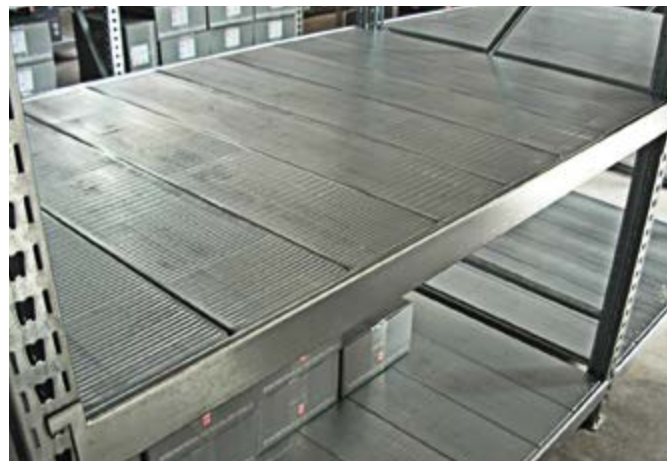
<b>Length (mm):</b>	500 to 2000
<b>Intermediate measures:</b>	Cutting Pitch 1 mm
<b>Material:</b>	Sendzimir Zinc Plated Steel
<b>Features:</b>	<ul style="list-style-type: none"> <li>• Ribbed surface</li> <li>• Head holes</li> </ul>



**Type Perforated 50% - Eyelet 8x38 mm**

<b>Available sections: W x H x THK (mm)</b>	100x30x0.8	150x30x0.8	200x30x0.8
	100x30x1.0	150x30x1.0	200x30x1.0
	100x30x1.2	150x30x1.2	200x30x1.2
	100x30x1.5	150x30x1.5	200x30x1.5

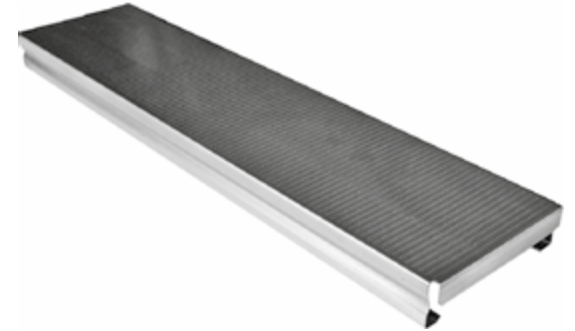
<b>Length (mm):</b>	500 to 2000
<b>Intermediate measures:</b>	Cutting Pitch 1 mm
<b>Material:</b>	Sendzimir Zinc Plated Steel
<b>Features:</b>	<ul style="list-style-type: none"> <li>• Ribbed surface</li> <li>• Head holes</li> </ul>



**Type Closed Ribbed**

<b>Available sections: W x H x THK (mm)</b>	100x40x0.6	150x40x0.6	200x40x0.6	300x40x0.6
	100x40x0.8	150x40x0.8	200x40x0.8	300x40x0.8
	100x40x1.0	150x40x1.0	200x40x1.0	300x40x1.0
	100x40x1.2	150x40x1.2	200x40x1.2	300x40x1.2
	100x40x1.5	150x40x1.5	200x40x1.5	300x40x1.5

<b>Length (mm):</b>	500 to 2000
<b>Intermediate measures:</b>	Cutting Pitch 1 mm
<b>Material:</b>	Sendzimir Zinc Plated Steel
<b>Features:</b>	<ul style="list-style-type: none"> <li>• Ribbed surface</li> <li>• Head holes</li> </ul>



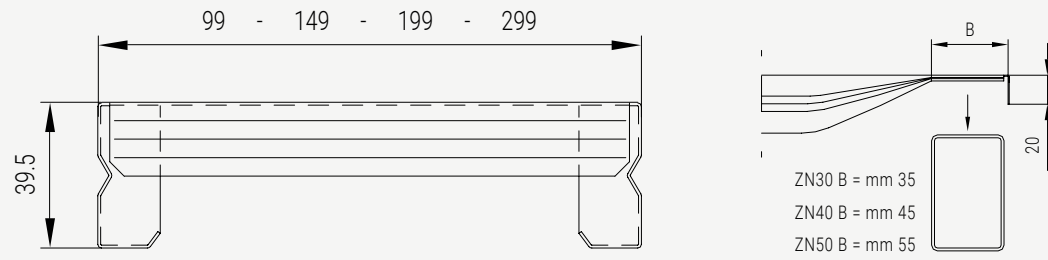
**Type Perforated 50% - Eyelet 8x38 mm**

<b>Available sections: W x H x THK (mm)</b>	100x40x0.8	150x40x0.8	200x40x0.8
	100x40x1.0	150x40x1.0	200x40x1.0
	100x40x1.2	150x40x1.2	200x40x1.2
	100x40x1.5	150x40x1.5	200x40x1.5

<b>Length (mm):</b>	500 to 2000
<b>Intermediate measures:</b>	Cutting Pitch 1 mm
<b>Material:</b>	Sendzimir Zinc Plated Steel
<b>Features:</b>	<ul style="list-style-type: none"> <li>• Ribbed surface</li> <li>• Head holes</li> </ul>



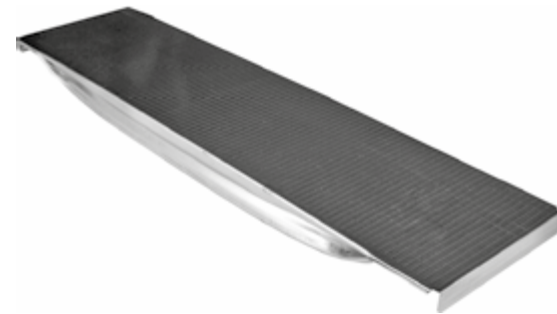




**Type Closed Ribbed**

<b>Available sections: W x H x THK (mm)</b>	100x40x0.6	150x40x0.6	200x40x0.6	300x40x0.6
	100x40x0.8	150x40x0.8	200x40x0.8	300x40x0.8
	100x40x1.0	150x40x1.0	200x40x1.0	300x40x1.0
	100x40x1.2	150x40x1.2	200x40x1.2	300x40x1.2
	100x40x1.5	150x40x1.5	200x40x1.5	300x40x1.5

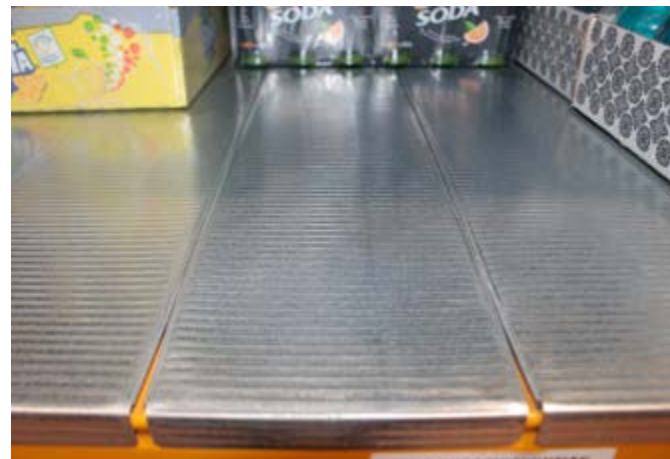
<b>Length (mm):</b>	500 to 2000
<b>Intermediate measures:</b>	Cutting Pitch 1 mm
<b>Material:</b>	Sendzimir Zinc Plated Steel
<b>Features:</b>	<ul style="list-style-type: none"> <li>• Ribbed surface</li> <li>• Possibility of having head holes</li> </ul>



**Type Perforated 50% - Eyelet 8x38 mm**

<b>Available sections: W x H x THK (mm)</b>	100x40x0.8	150x40x0.8	200x40x0.8
	100x40x1.0	150x40x1.0	200x40x1.0
	100x40x1.2	150x40x1.2	200x40x1.2
	100x40x1.5	150x40x1.5	200x40x1.5

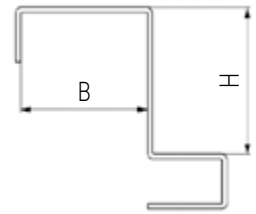
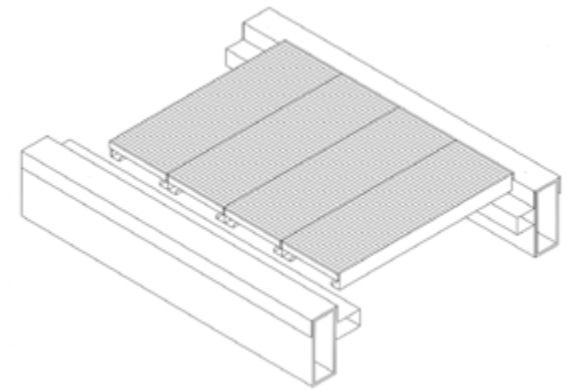
<b>Length (mm):</b>	500 to 2000
<b>Intermediate measures:</b>	Cutting Pitch 1 mm
<b>Material:</b>	Sendzimir Zinc Plated Steel
<b>Features:</b>	<ul style="list-style-type: none"> <li>• Ribbed surface</li> <li>• Possibility of having head holes</li> </ul>



**Type BRACKET profile**

<b>Available sections: W x H x THK (mm)</b>	
40x25x1.5	40x25x2.0
40x30x1.5	40x30x2.0
40x40x1.5	40x40x2.0
40x58x1.5	40x58x2.0
50x25x1.5	50x25x2.0
50x30x1.5	50x30x2.0
50x40x1.5	50x40x2.0
50x58x1.5	50x58x2.0

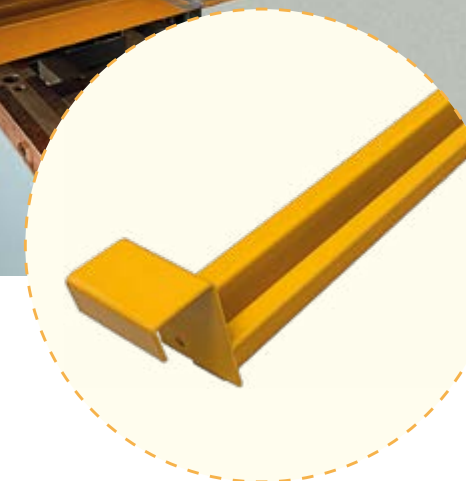
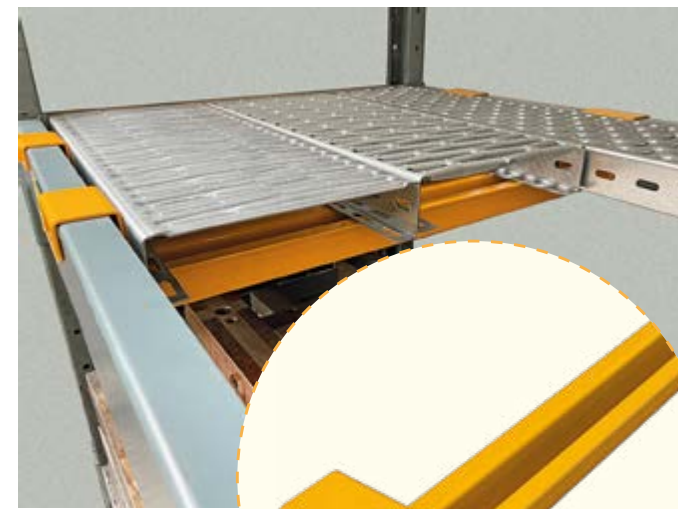
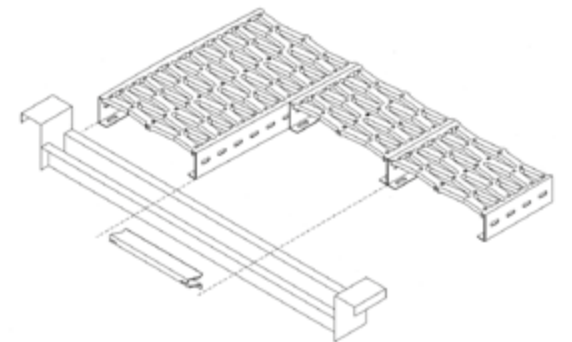
<b>Length (mm):</b>	up to 3000
<b>Intermediate measures:</b>	Cutting Pitch 1 mm
<b>Material:</b>	Sendzimir Zinc Plated Steel
<b>Features:</b>	Application on tubular beams for creating continuous levels



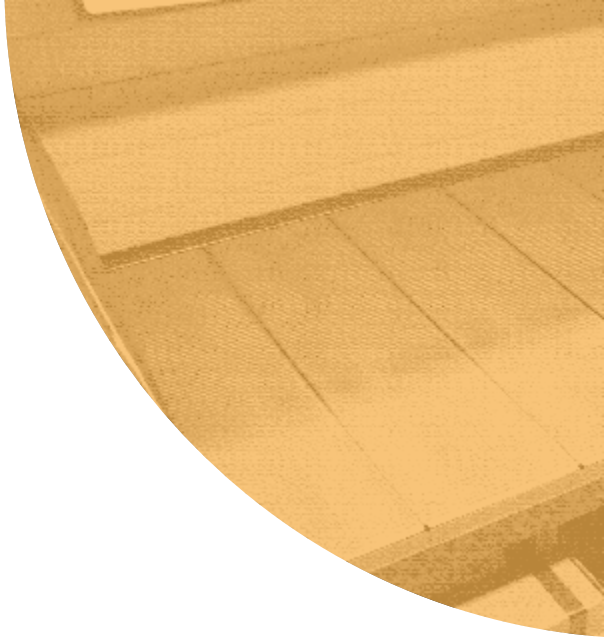
**Type "Omega" lowered Crossbeam with pressure bracket anchorage**

<b>Available sections: spalla x corrente (mm)</b>	1000x40	1000x50
	1100x40	1100x50
	1200x40	1200x50

<b>Intermediate measures:</b>	Cutting Pitch 1 mm
<b>Material:</b>	Raw / Pickled S235JR
<b>Features:</b>	<ul style="list-style-type: none"> <li>• Painting RAL on request</li> <li>• Non-standard lengths on request</li> </ul>







10.2024



**ABAGRIGLIATI S.R.L**  
*forging ideas since 1975*

Via dell'Artigianato 10,  
Massanzago (PD) 35010

+39 049 579 7535  
info@abagrigliati.it  
www.abagrigliati.it

